



www.movindonesia.com



GEAR ACTUATOR

MIA PT. MOV INDONESIA ABADI



PT. MOV INDONESIA ABADI

Head office: Victoria Park Residence Jl. Liga Selatan Blok E1/8 Karawaci Tangerang, Indonesia

Tel: +62-21-5589634/43 WhatsApp: +62-81291191059

Email: movindonesiaabadi@yahoo.com, agustinuswira95@gmail.com

Web: www.movindonesia.com

Quality manufacturer specialized in gear actuator

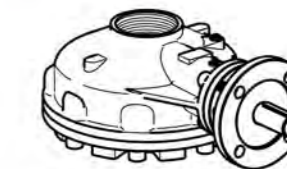
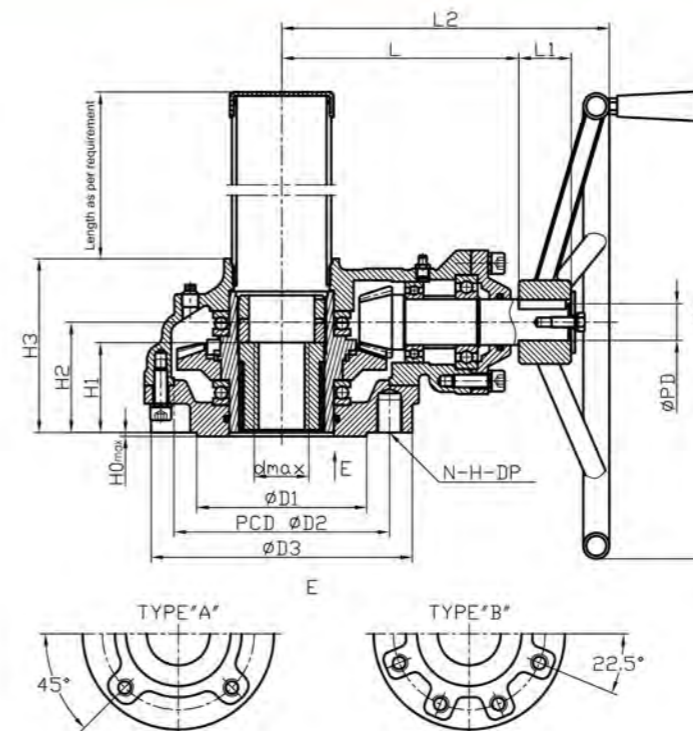
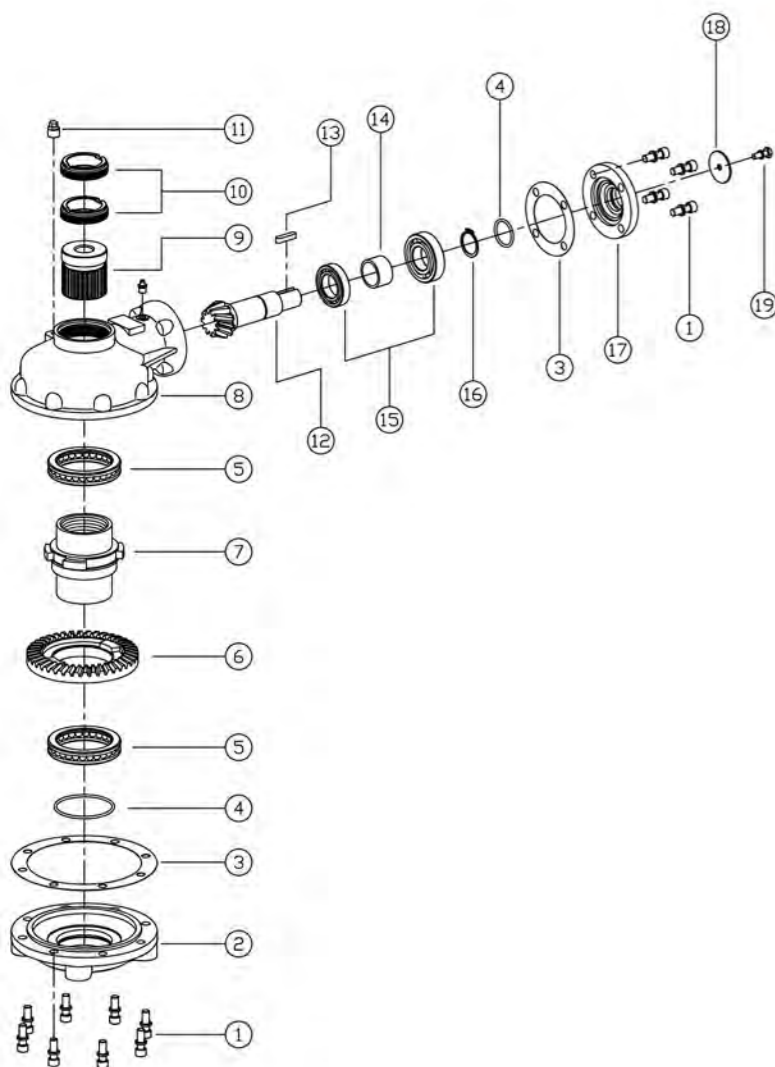


Characteristic

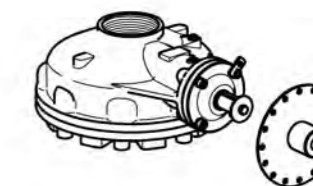
1. Widely used on the Gate & Globe valves and so on under thrust loads;
2. Flexible operation, Giant torque, Little noise, Stable movement and high efficiency are made by adopting arc bevel gear and plane thrust bearing.
3. Protect grade can be IP65;
4. Handwheel size and stem cover length can be customized according to requirements

Parts and Material List

NO	Description	Material	Material number
1	Bolts	Carbon Steel	ASTM A29M-1045
2	Base	Carbon Steel/ Ductile iron	ASTM A216 WCB / ASTM A536 65-45-12
3	Sealing Gasket	Insulation paper	
4	O-ring	Rubber	NBR
5	Thrust Bearing	Alloy Steel	ASTM A295-52100
6	Bevel gear	Carbon Steel	ASTM A29M-1045
7	Drive Sleeve	Ductile iron	ASTM A536 65-45-12
8	Housing	Carbon Steel/ Ductile iron	ASTM A216 WCB / ASTM A536 65-45-12
9	Stem Nut	Brass	ASTM C85500
10	Lock nut	Carbon Steel	ASTM A29M-1020
11	Grease Nipple	Carbon Steel	ASTM A29M-1020
12	Pinion Gear	Carbon Steel	ASTM A29M-1045
13	Key	Carbon Steel	ASTM A29M-1045
14	Collar	Carbon Steel	ASTM A29M-1020
15	Bearing	Alloy Steel	ASTM A295-52100
16	Snap Ring	Carbon Steel	ASTM A29-1566
17	Gland Cover	Carbon Steel/ Ductile iron	ASTM A216 WCB / ASTM A536 65-45-12
18	Handwheel Indicator	Carbon Steel	ASTM A29M-1020
19	Bolts	Carbon Steel	ASTM A29M-1045



With flange for connecting with actuator
It follows:ISO5210



With locking device to avoid
unnecessary working

Dimension

MODEL	DIM	Mounting Base					External Part					Input Shaft Part		Handwheel			
		Type	Flange Size	D1	P.C.D		D3	H0	H1	H2	H3	L2	L	L1	PD	KEY	M
					D2	N-H-DP											
BH-VS10	A	F-10	70	102	4-M10-15	125	3	47	70	104	186	131	36	26	8 X 7	300	
BH-VS20		F-12	85	125	4-M12-18	150	3	49	70	113	195	140	36	26	8 X 7	300	
BH-V0		F-14	100	140	4-M16-24	175	4	58	78	124	230	165	40	28	8 X 7	400	
BH-V1		F-16	130	165	4-M20-30	210	5	69	85	133	247	182	40	28	8 X 7	450	
BH-V2	B	(F-20)	140	205	8-M16-24	250	5	69	87	145	276	202	40	32	10 X 8	500	
BH-V3		F-25	200	254	8-M16-24	300	5	82	95	159	311	226	47	32	10 X 8	600	
BH-V35		F-30	230	298	8-M20-30	350	5	103	133	208	381	296	57	32	10 X 8	650	
BH-V4		F-35	260	356	8-M30-45	415	5	146	149	246	437	352	60	38	10 X 8	700	
BH-V5		F-35	260	356	8-M30-45	415	5	159	172	276	444	359	51	38	10 X 8	700	
BH-V6		F-40	300	406	8-M36-54	475	8	174	209	348	461	376	63	50	16 X 10	800	

Unit:mm

Technical Parameters

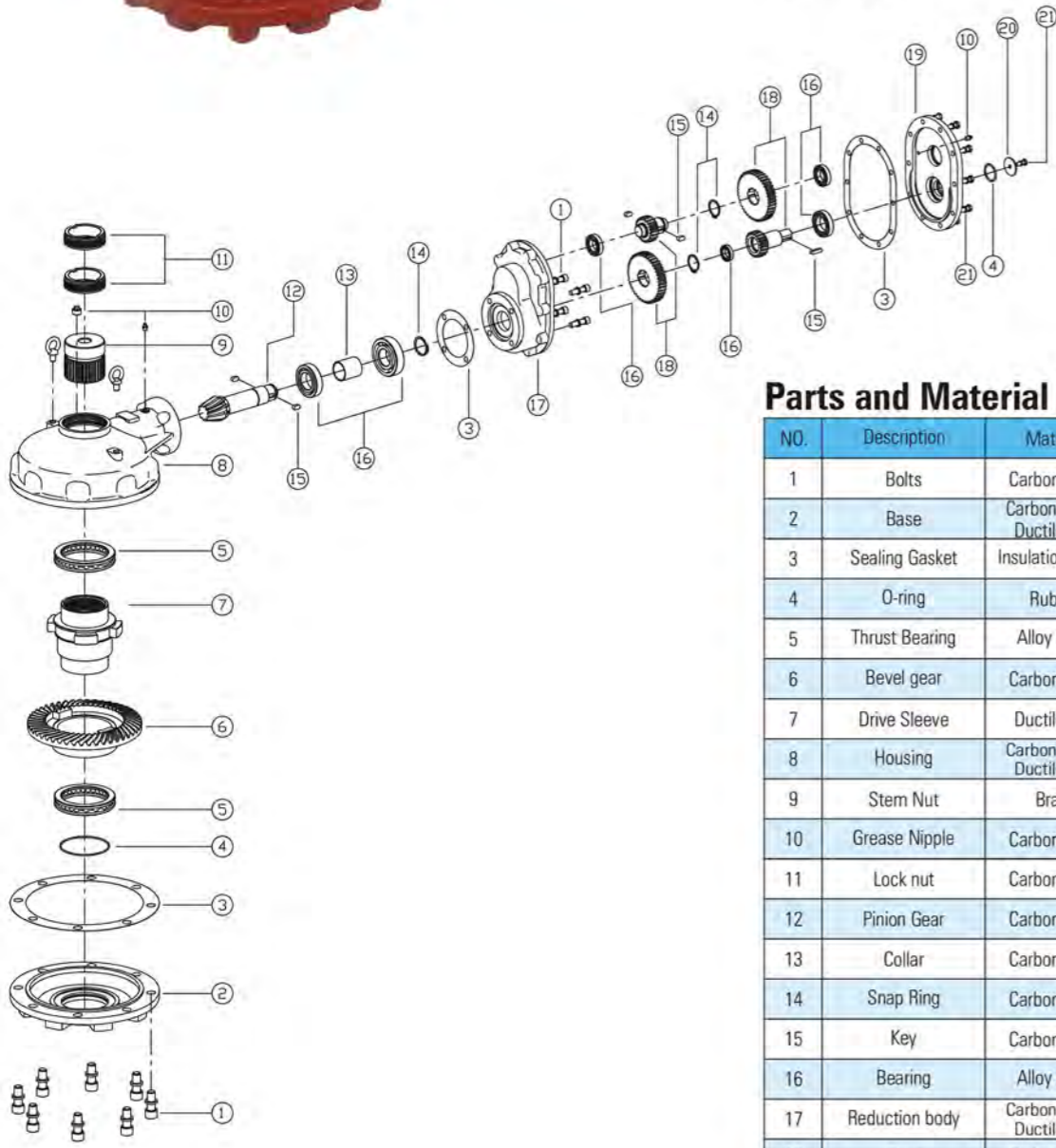
MODEL	PARA	Ratio	Flange Size (ISO5211)	Max Valve Stem d _{max}	MAX Thrust	Max Torque Accepted		M.A.	Weight
						Input	Output		
						Nm	Nm		
BH-VS10		2.5:1	F-10	22	75	105	220	2.1	9
BH-VS20		3:1	F-12	28	113	140	350	2.5	12
BH-V0		3:1	F-14	36	127	220	550	2.5	18
BH-V1		3.6:1	F-16	42	141	290	900	3.1	23
BH-V2		4.1:1	(F-20)	50	190	345	1200	3.5	34
BH-V3		4.5:1	F-25	58	268	475	1800	3.8	45
BH-V35		5.2:1	F-30	68	308	640	2800	4.4	83
BH-V4		5.7:1	F-35	80	402	730	3500	4.8	143
BH-V5		6.3:1	F-35	95	512	840	4500	5.4	190
BH-V6		6.3:1	F-40	110	1110	1260	6800	5.4	277

Remark:
Input torque := $\frac{\text{Output torque}}{\text{M.A.}}$



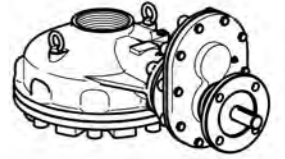
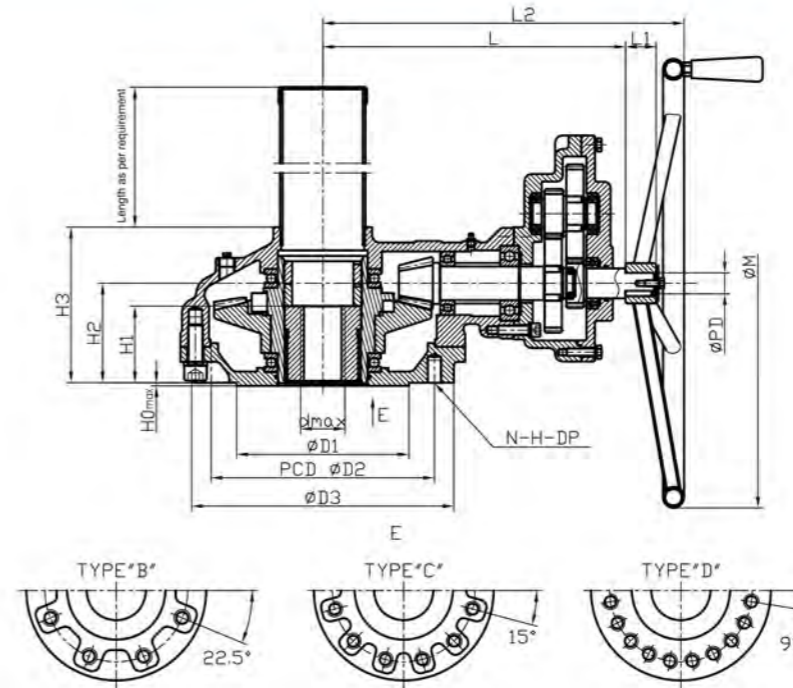
Characteristic

1. Widely used on the Gate &Globe valves and so on under thrust loads;
2. Flexible operation, Giant torque, Little noise, Stable movement and high efficiency are made by adopting arc bevel gear and plane thrust bearing.
3. Protect grade can be IP65;
4. One more reducer is used on the gear box, can operate more easily while the ratio is larger;
5. Handwheel size and stem cover length can be customized according to requirements.

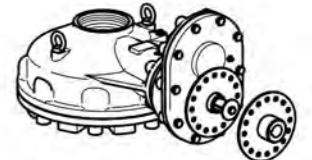


Parts and Material List

NO.	Description	Material	Material number
1	Bolts	Carbon Steel	ASTM A29M-1045
2	Base	Carbon Steel/ Ductile iron	ASTM A216 WCB/ ASTM A536 65-45-12
3	Sealing Gasket	Insulation paper	
4	O-ring	Rubber	NBR
5	Thrust Bearing	Alloy Steel	ASTM A295-52100
6	Bevel gear	Carbon Steel	ASTM A29M-1045
7	Drive Sleeve	Ductile iron	ASTM A536 65-45-12
8	Housing	Carbon Steel/ Ductile iron	ASTM A216 WCB/ ASTM A536 65-45-12
9	Stem Nut	Brass	ASTM C85500
10	Grease Nipple	Carbon Steel	ASTM A29M-1020
11	Lock nut	Carbon Steel	ASTM A29M-1020
12	Pinion Gear	Carbon Steel	ASTM A29M-1045
13	Collar	Carbon Steel	ASTM A29M-1020
14	Snap Ring	Carbon Steel	ASTM A29-1566
15	Key	Carbon Steel	ASTM A29M-1045
16	Bearing	Alloy Steel	ASTM A295-52100
17	Reduction body	Carbon Steel/ Ductile iron	ASTM A216 WCB/ ASTM A536 65-45-12
18	Gear	Carbon Steel	ASTM A29M-1045
19	Reduction cover	Carbon Steel/ Ductile iron	ASTM A216 WCB/ ASTM A536 65-45-12
20	Handwheel indicator	Carbon Steel	ASTM A29M-1020
21	Bolts	Carbon Steel	ASTM A29M-1045



With flange for connecting with actuator it follows:ISO5210



With locking device to avoid unnecessary working

Dimension

MODEL	DIM	Mounting Base						External Part					Input Shaft Part		Handwheel		
		Type	Flange Size	D1	P.C.D		D3	H0	H1	H2	H3	L2	L	L1	PD	KEY	M
					D2	N-H-DP											
BH-V2-1S	B	(F-20)	140	205	8-M16-24	250	5	69	87	145	375	310	40	28	8 X 7	450	
BH-V3-1S		(F-25)	200	254	8-M16-24	300	5	82	95	159	403	338	40	28	8 X 7	500	
BH-V35-1S		(F-30)	230	298	8-M20-30	350	5	103	133	208	489	404	40	28	8 X 7	600	
BH-V4-1S		(F-35)	260	356	8-M30-45	415	5	146	149	246	563	478	51	38	10 X 8	650	
BH-V5-1S		(F-35)	260	356	8-M30-45	415	5	159	172	276	570	485	51	38	10 X 8	700	
BH-V6-1S		(F-40)	300	406	8-M36-54	475	8	174	209	348	593	508	51	38	10 X 8	700	
BH-V7-1S	C	F-48	370	483	12-M36-54	560	8	196	219	346	646	561	52	45	14 X 9	800	
BH-V8-1S		D	F-60	470	603	20-M36-54	700	8	217	237	382	687	602	52	45	14 X 9	800
BH-V9-1S	F-60		470	603	20-M36-54	805	8	242	260	445	831	746	52	45	14 X 9	1000	

Unit:mm

Technical Parameters

MODEL	PARA	Ratio	Flange Size (ISO5211)	Max Valve Stem dmax	MAX.Thrust	Max Torque Accepted		M.A.	Weight
						Input	Output		
BH-V2-1S		13.3:1	(F-20)	50	190	160	1400	9	55
BH-V3-1S		19.9:1	F-25	58	268	170	2300	13.5	70
BH-V35-1S		23:1	F-30	68	308	260	4000	15.6	107
BH-V4-1S		38.5:1	F-35	80	402	195	5000	26	186
BH-V5-1S		42.8:1	F-35	95	512	310	9000	29	230
BH-V6-1S		42.8:1	F-40	110	1110	520	15000	29	320
BH-V7-1S		94.4:1	F-48	120	1310	320	20000	64	460
BH-V8-1S		112:1	F-60	140	2140	400	30000	76	690
BH-V9-1S		143.5:1	F-60	180	4000	510	50000	98	1150

Remark: $\frac{\text{Output torque}}{\text{Input torque}} = \frac{\text{M.A.}}{\text{M.A.}}$

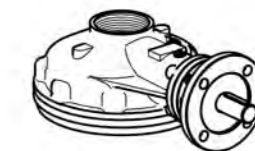
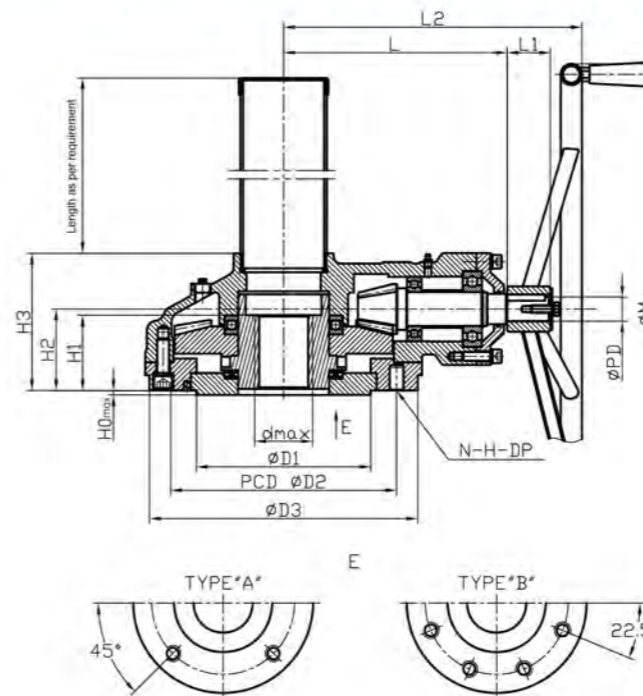
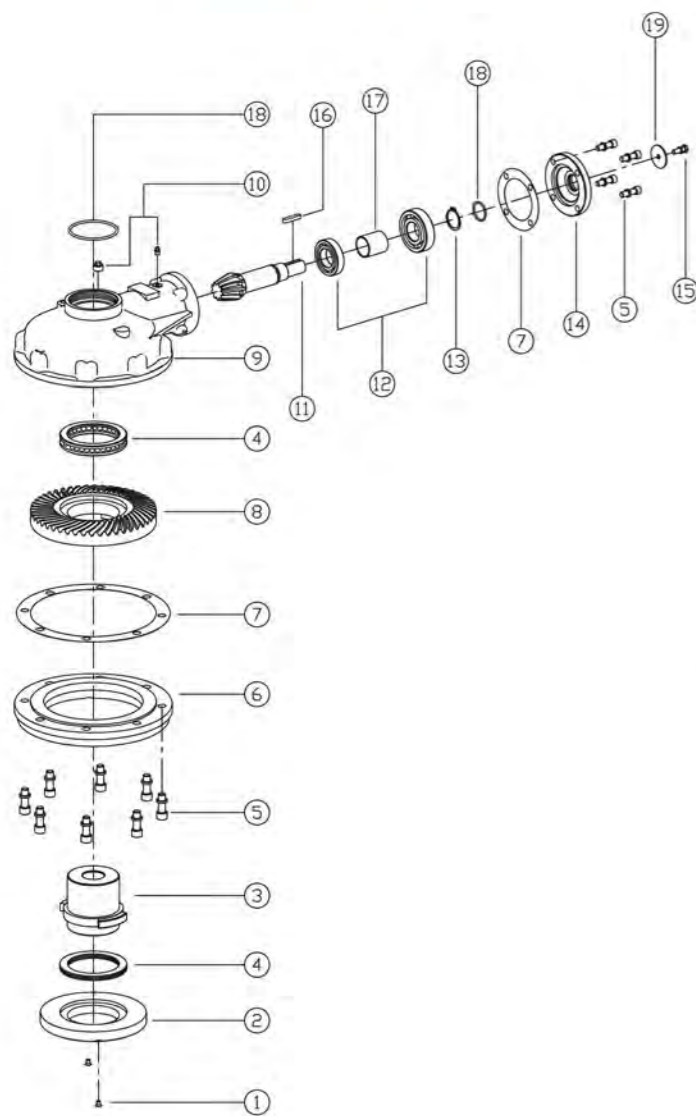


Characteristic

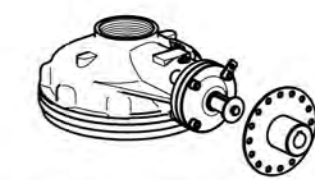
1. Widely used on the Gate & Globe valves and so on under thrust loads;
2. Flexible operation, Giant torque, Little noise, Stable movement and high efficiency are made by adopting arc bevel gear and plane thrust bearing.
3. Protect grade can be IP65;
4. Without stem nut but drive bush, allowed bigger valve stem diameter.
5. Handwheel size and stem cover length can be customized according to requirements

Parts and Material List

NO.	Description	Material	Material number
1	Bolts	Carbon Steel	ASTM A29M-1045
2	Gland	Carbon Steel	ASTM A29M-1020
3	Drive Bush	Bronze	ASTM C61900
4	Thrust Bearing	Alloy Steel	ASTM A295-52100
5	Bolts	Carbon Steel	ASTM A29M-1045
6	Base	Carbon Steel	ASTM A29M-1020
7	Sealing Gasket	Insulation paper	
8	Bevel gear	Carbon Steel	ASTM A29M-1045
9	Housing	Carbon Steel	ASTM A216 WCB
10	Grease Nipple	Carbon Steel	ASTM A29M-1020
11	Pinion Gear	Carbon Steel	ASTM A29M-1045
12	Bearing	Alloy Steel	ASTM A295-52100
13	Snap Ring	Carbon Steel	ASTM A29-1566
14	End Cover	Carbon Steel	ASTM A216 WCB
15	Bolts	Carbon Steel	ASTM A29M-1045
16	Key	Carbon Steel	ASTM A29M-1045
17	Collar	Carbon Steel	ASTM A29M-1020
18	O-ring	Rubber	NBR
19	Handwheel indicator	Carbon Steel	ASTM A29M-1020



With flange for connecting with actuator It follows:ISO5210



With locking device to avoid unnecessary working

Dimension

MODEL	DIM	Mounting Base											External Part		Input Shaft Part		Handwheel
		Type	Flange Size	D1	P.C.D		D3	H0	H1	H2	H3	L2	L	L1	PD	KEY	M
					D2	N-H-DP											
RK03	A	F-12	85	125	4-M12-18	150	3	53	68	109	209	154	31	21	6 X 6	300	
RK05		F-14	100	140	4-M16-24	175	4	65	78	125	237	172	36	26	8 X 7	400	
RK1		F-16	130	165	4-M20-30	210	5	73	91	138	247	182	40	28	8 X 7	500	
2CK2	B	(F-20)	140	205	8-M16-24	250	5	77	81	140	269	204	40	32	10 X 8	550	
2CK3		F-25	200	254	8-M16-24	300	5	86	88	152	310	225	47	32	10 X 8	600	
2CK5		F-30	230	298	8-M20-30	350	5	102	108	181	380	295	57	32	10 X 8	700	
2CK8		F-35	260	356	8-M30-45	430	5	132	141	238	419	333	51	38	10 X 8	800	
2CK10		F-40	300	406	8-M36-50	475	8	138	168	270	444	359	51	38	10 X 8	800	

Technical Parameters

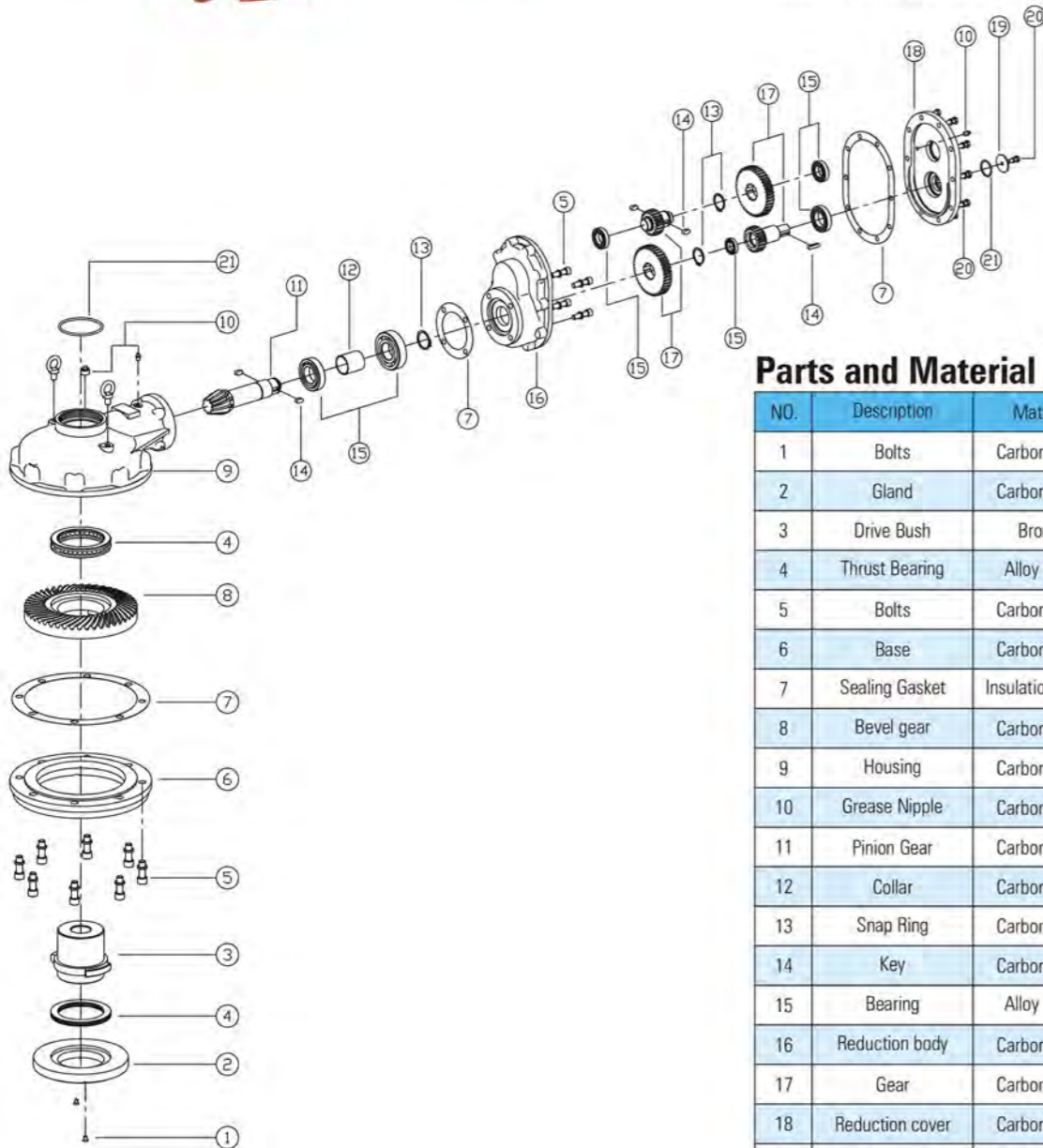
MODEL	PARA	Ratio	Flange Size (ISO5211)	Max Valve Stem d _{max}	MAX Thrust	Max Torque Accepted		M.A.	Weight
						Input	Output		
						Nm	Nm		
RK03		4:1	F-12	40	93	105	350	3.4	15
RK05		4:1	F-14	52	127	165	550	3.4	21
RK1		4:1	F-16	60	141	265	900	3.4	29
2CK2		4.2:1	(F-20)	65	190	335	1200	3.6	41
2CK3		4.1:1	F-25	75	268	575	2000	3.5	54
2CK5		5.2:1	F-30	90	308	640	2800	4.4	88
2CK8		5.6:1	F-35	110	377	730	3500	4.8	160
2CK10		6.3:1	F-40	130	427	840	4500	5.4	215

Remark: Input torque := $\frac{\text{Output torque}}{\text{M.A.}}$



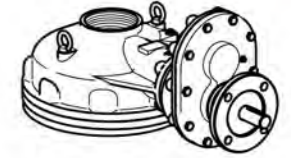
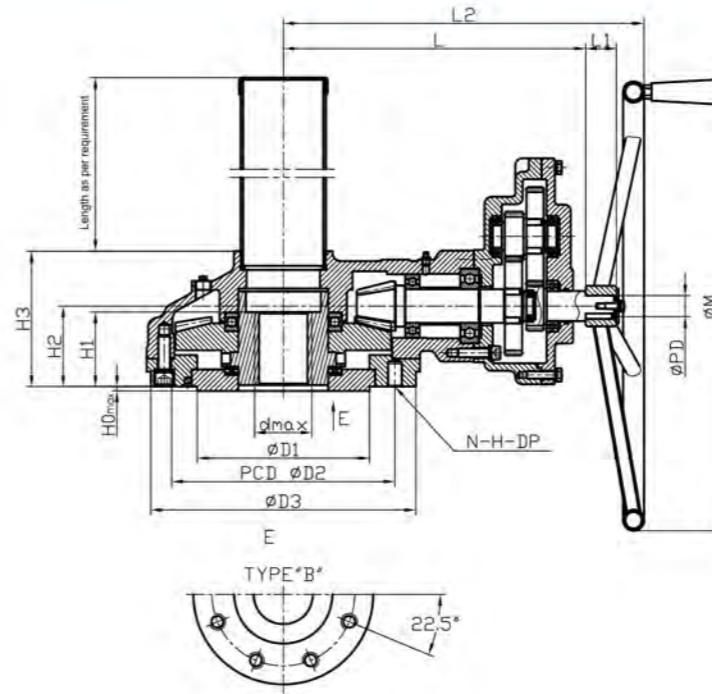
Characteristic

1. Widely used on the Gate & Globe valves and so on under thrust loads;
2. Flexible operation, Giant torque, Little noise, Stable movement and high efficiency are made by adopting arc bevel gear and plane thrust bearing.
3. Protect grade can be IP65;
4. One more reducer is used on the gear box, can operate more easily while the ratio is larger;
5. Without stem nut but drive bush, allowed bigger valve stem diameter;
6. Handwheel size and stem cover length can be customized according to requirements.

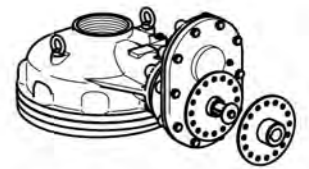


Parts and Material List

NO.	Description	Material	Material number
1	Bolts	Carbon Steel	ASTM A29M-1045
2	Gland	Carbon Steel	ASTM A29M-1020
3	Drive Bush	Bronze	ASTM C61900
4	Thrust Bearing	Alloy Steel	ASTM A295-52100
5	Bolts	Carbon Steel	ASTM A29M-1045
6	Base	Carbon Steel	ASTM A29M-1020
7	Sealing Gasket	Insulation paper	
8	Bevel gear	Carbon Steel	ASTM A29M-1045
9	Housing	Carbon Steel	ASTM A216 WCB
10	Grease Nipple	Carbon Steel	ASTM A29M-1020
11	Pinion Gear	Carbon Steel	ASTM A29M-1045
12	Collar	Carbon Steel	ASTM A29M-1020
13	Snap Ring	Carbon Steel	ASTM A29-1566
14	Key	Carbon Steel	ASTM A29M-1045
15	Bearing	Alloy Steel	ASTM A295-52100
16	Reduction body	Carbon Steel	ASTM A216 WCB
17	Gear	Carbon Steel	ASTM A29M-1045
18	Reduction cover	Carbon Steel	ASTM A216 WCB
19	Handwheel indicator	Carbon Steel	ASTM A29M-1020
20	Bolts	Carbon Steel	ASTM A29M-1020
21	O-ring	Rubber	NBR



With flange for connecting with actuator It follows:ISO5210



With locking device to avoid unnecessary working

Dimension

MODEL	DIM	Mounting Base					External Part					Input Shaft Part		Handwheel			
		Type	Flange Size	D1	P.C.D		D3	H0	H1	H2	H3	L2	L	L1	PD	KEY	M
					D2	N-H-DP											
2CK2-1S	B	(F-20)	140	205	8-M16-24	250	5	77	81	140	378	313	40	28	8 X 7	500	
2CK3-1S	B	F-25	200	254	8-M16-24	300	5	86	88	152	402	337	40	28	8 X 7	550	
2CK5-1S	B	F-30	230	298	8-M20-30	350	5	102	108	181	489	404	40	28	8 X 7	600	
2CK8-1S	B	F-35	260	356	8-M30-45	430	5	132	141	238	544	459	51	38	10 X 8	700	
2CK10-1S	B	F-40	300	406	8-M36-50	475	8	138	168	270	570	485	51	38	10 X 8	700	

Unit:mm

Technical Parameters

MODEL	PARA	Ratio	Flange Size (ISO5211)	Max Valve Stem dmax mm	MAX.Thrust KN	Max Torque Accepted		M.A. ± 10%	Weight kg
						Input	Output		
						Nm	Nm		
2CK2-1S		13.6:1	(F-20)	65	190	155	1400	9.2	62
2CK3-1S		18:1	F-25	75	268	190	2300	12.2	78
2CK5-1S		23:1	F-30	90	308	260	4000	15.6	115
2CK8-1S		37.9:1	F-35	110	377	235	6000	25.8	205
2CK10-1S		42.8:1	F-40	130	427	310	9000	29	250

Remark:
Input torque:= $\frac{\text{Output torque}}{\text{M.A.}}$

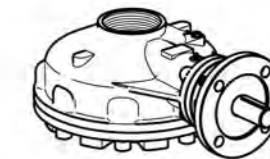
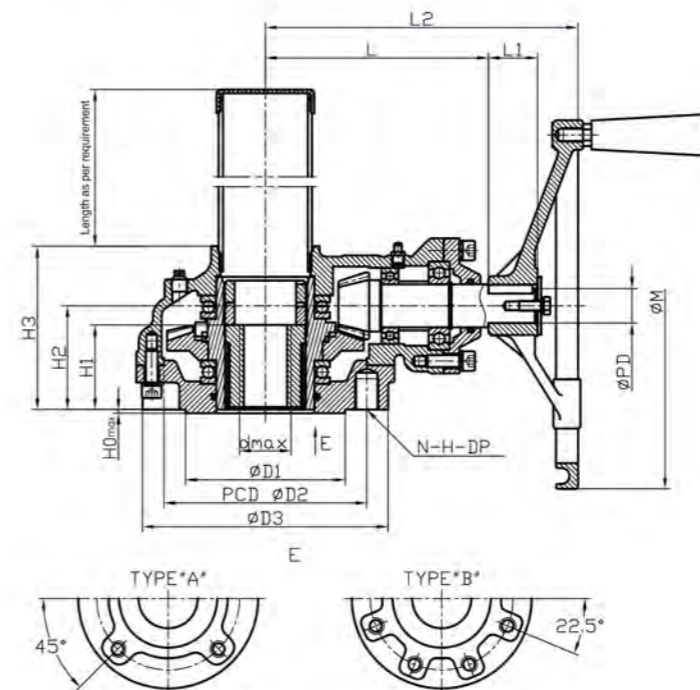
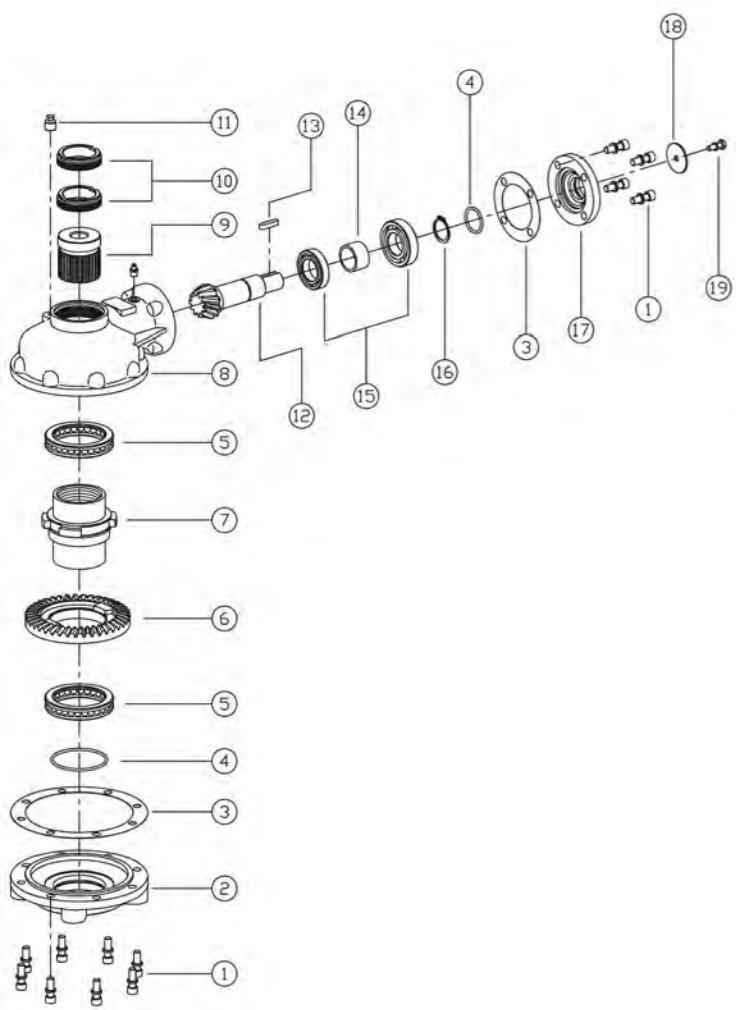


Characteristic

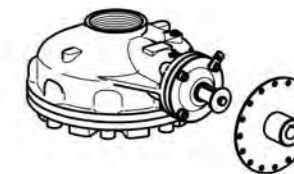
1. Widely used on the Gate & Globe valves and so on under thrust loads;
2. Flexible operation, Giant torque, Little noise, Stable movement and high efficiency are made by adopting arc bevel gear and plane thrust bearing.
3. Protect grade can be IP65;
4. Handwheel size and stem cover length can be customized according to requirements

Parts and Material List

NO.	Description	Material	Material number
1	Bolts	Carbon Steel	ASTM A29M-1045
2	Base	Carbon Steel/ Ductile iron	ASTM A216 WCB / ASTM A536 65-45-12
3	Sealing Gasket	Insulation paper	
4	O-ring	Rubber	NBR
5	Thrust Bearing	Alloy Steel	ASTM A295-52100
6	Bevel gear	Carbon Steel	ASTM A29M-1045
7	Drive Bush	Ductile iron	ASTM A536 65-45-12
8	Housing	Carbon Steel/ Ductile iron	ASTM A216 WCB / ASTM A536 65-45-12
9	Stem Nut	Brass	ASTM C85500
10	Lock Nut	Carbon Steel	ASTM A29M-1020
11	Grease Nipple	Carbon Steel	ASTM A29M-1020
12	Pinion Gear	Carbon Steel	ASTM A29M-1045
13	Key	Carbon Steel	ASTM A29M-1045
14	Collar	Carbon Steel	ASTM A29M-1020
15	Bearing	Alloy Steel	ASTM A295-52100
16	Snap Ring	Carbon Steel	ASTM A29-1566
17	Gland Cover	Carbon Steel/ Ductile iron	ASTM A216 WCB / ASTM A536 65-45-12
18	Handwheel indicator	Carbon Steel	ASTM A29M-1020
19	Bolts	Carbon Steel	ASTM A29M-1045



With flange for connecting with actuator
It follows:ISO5210



With locking device to avoid
unnecessary working

Dimension

MODEL	DIM	Mounting Base						External Part					Input Shaft Part		Handwheel		
		Type	Flange Size	D1	P.C.D		D3	H0	H1	H2	H3	L2	L	L1	PD	KEY	M
					D2	N-H-DP											
BA-0000	A	F-10	70	102	4-M10-15	125	3	47	70	104	198	131	36	26	8 X 7	250	
BA-000		F-12	85	125	4-M12-18	150	3	49	70	113	207	140	36	26	8 X 7	250	
BA-00		F-14	100	140	4-M16-24	175	4	58	78	124	238	165	40	28	8 X 7	300	
BA-0		F-16	130	165	4-M20-30	210	5	69	85	133	255	182	40	28	8 X 7	300	
BA-01	B	(F-20)	140	205	8-M16-24	250	5	69	87	145	276	202	40	32	10X 8	400	
BA-1		F-25	200	254	8-M16-24	300	5	78	94	162	311	230	52	32	10X 8	460	
BA-2		F-30	230	298	8-M20-30	350	5	101	133	208	390	296	57	32	10X 8	520	
BA-3		F-35	260	356	8-M30-45	415	5	146	149	246	442	352	60	38	10X 8	600	
BAA-3		F-35	260	356	8-M30-45	415	5	160	161	301	551	461	60	38	10X 8	600	

Unit:mm

Technical Parameters

MODEL	PARA	Ratio	Flange Size (ISO5211)	Max Valve Stem dmax mm	MAX.Thrust KN	Max Torque Accepted		M.A. ±10%	Weight Kg
						Input	Output		
						Nm	Nm		
BA-0000		2.5:1	F-10	22	75	105	220	2.1	9
BA-000		3:1	F-12	28	113	140	350	2.5	12
BA-00		3:1	F-14	36	127	220	550	2.5	18
BA-0		3.6:1	F-16	42	141	290	900	3.1	23
BA-01		4.1:1	(F-20)	50	190	345	1200	3.5	35
BA-1		4.5:1	F-25	50	268	395	1500	3.8	45
BA-2		5.2:1	F-30	60	308	640	2800	4.4	90
BA-3		5.7:1	F-35	80	402	730	3500	4.8	143
BAA-3		20:1	F-35	95	986	415	6000	14.5	250

Remark:
Input torque:= $\frac{\text{Output torque}}{\text{M.A.}}$

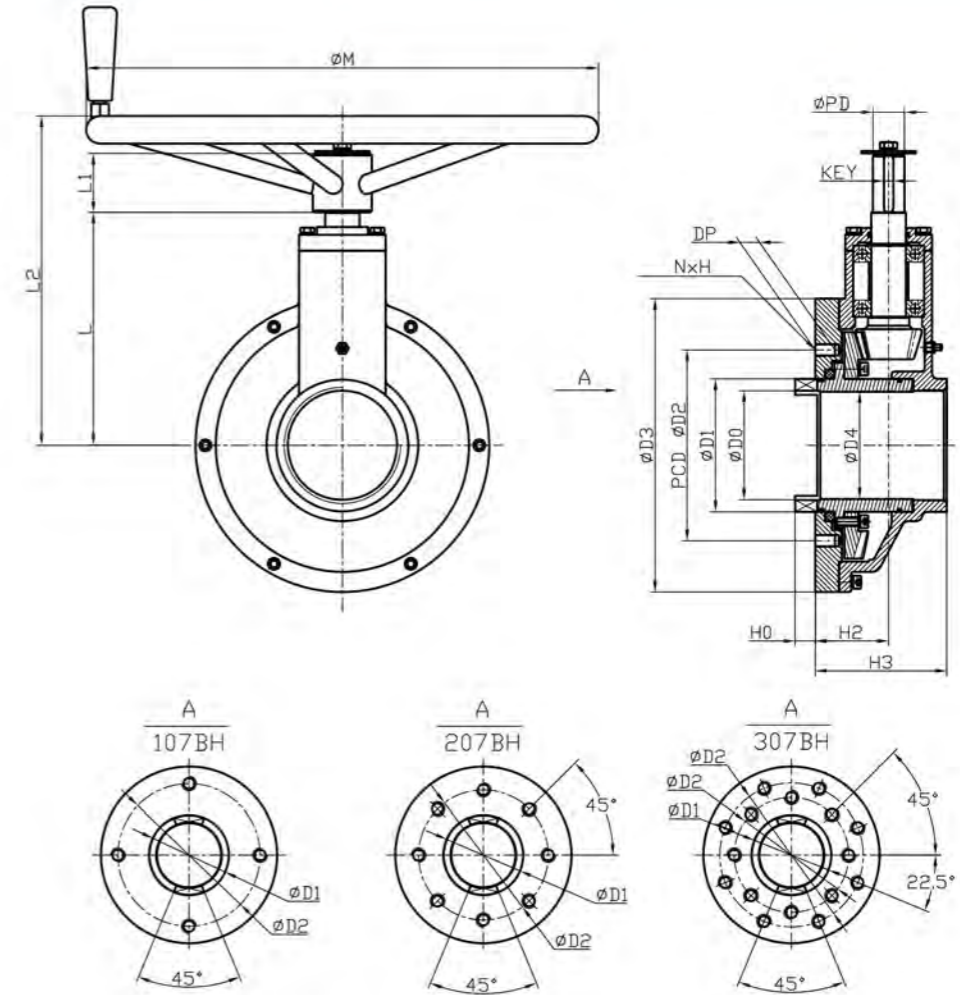
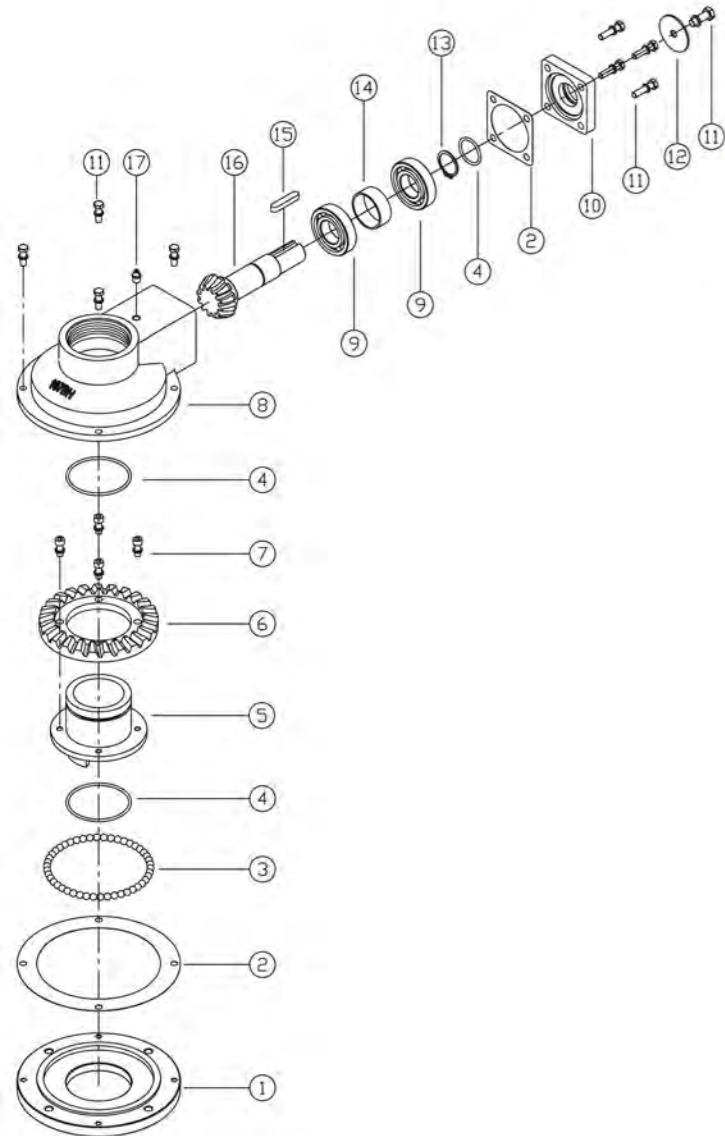


Characteristic

1. Widely used on the Gate & Globe valves and so on under thrust loads;
2. Flexible operation, Giant torque, Little noise, Stable movement and high efficiency are made by adopting arc bevel gear;
3. Protect grade can be IP65;
4. With simple structure, there is no stem nut, connected with valve by the kits with two pawls.
5. Handwheel size and stem cover length can be customized according to requirements

Parts and Material List

NO.	Description	Material	Material number
1	Base	Ductile iron	ASTM A536 65-45-12
2	Sealing Gasket	Insulation paper	
3	Bearing balls	Alloy Steel	ASTM A295-52100
4	O-ring	Rubber	NBR
5	Drive Sleeve	Ductile iron	ASTM A536 65-45-12
6	Bevel gear	Carbon Steel	ASTM A29M-1045
7	Bolts	Carbon Steel	ASTM A29M-1045
8	Housing	Ductile iron	ASTM A536 65-45-12
9	Bearing	Alloy Steel	ASTM A295-52100
10	Gland Cover	Ductile iron	ASTM A536 65-45-12
11	Bolts	Carbon Steel	ASTM A29M-1045
12	Handwheel indicator	Carbon Steel	ASTM A29M-1020
13	Snap Ring	Carbon Steel	ASTM A29-1566
14	Collar	Carbon Steel	ASTM A29M-1020
15	Key	Carbon Steel	ASTM A29M-1045
16	Pinion Gear	Carbon Steel	ASTM A29M-1045
17	Grease Nipple	Carbon Steel	ASTM A29M-1020



Dimension

MODEL	DIM	Mounting Base					External Part					Input Shaft Part			Handwheel	
		D1	D0	P.C-D		D3	H0	D4	H2	H3	L2	L	L1	PD	KEY	M
				D2	N X H DP											
107BH		90	70	193.8	4X1/2-13UNC 17	225	12.7	70	64	112	250	185	52	32	10	450
207BH		135	107	193.8	8X1/2-13UNC 20	298	19.8	105	75	134	322	237	60	32	10	600
307BH		140	109	193.8	8X1/2-13UNC 20	413	19	109	89	166	459	374	60	32	10	700
				356	8X1-8UNC 20											

Technical Parameters

MODEL	PARA	Ratio	Max Torque		M.A.	Weight
			Input	Output		
			Nm	Nm		
107BH		3:1	500	1300	±10%	19
207BH		4.2:1	742	2600	±10%	36
307BH		6:1	941	4800	±10%	88

Remark: $\text{Input torque} = \frac{\text{Output torque}}{\text{M.A.}}$

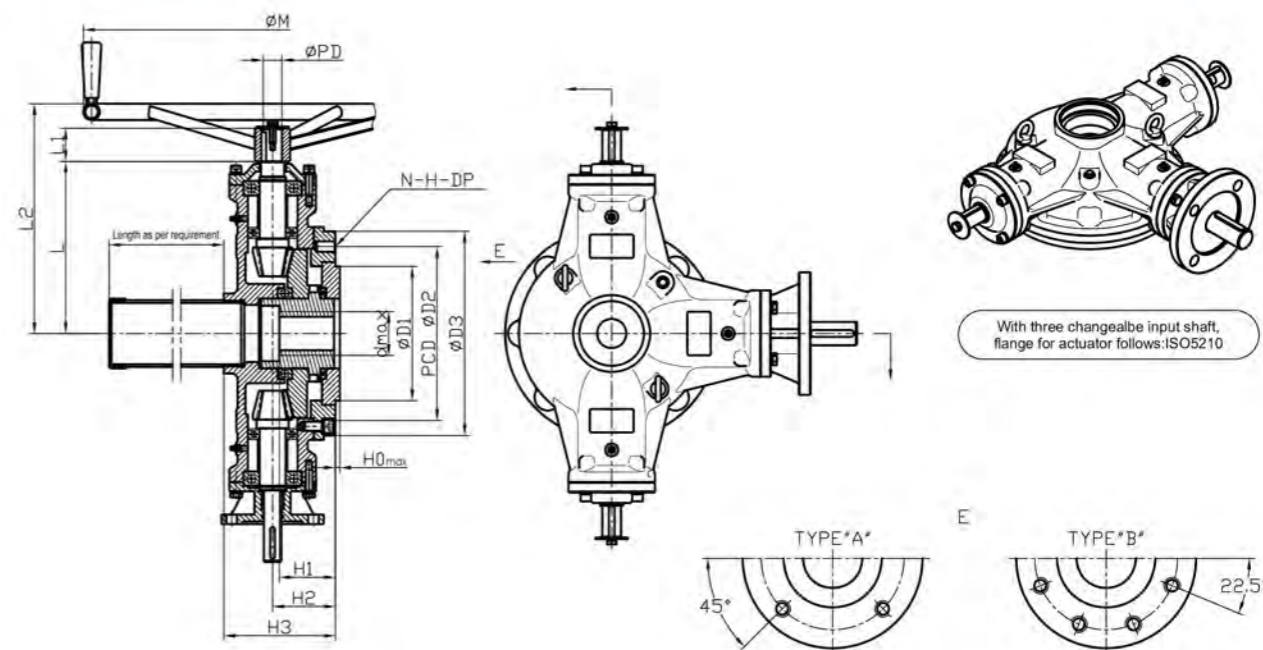
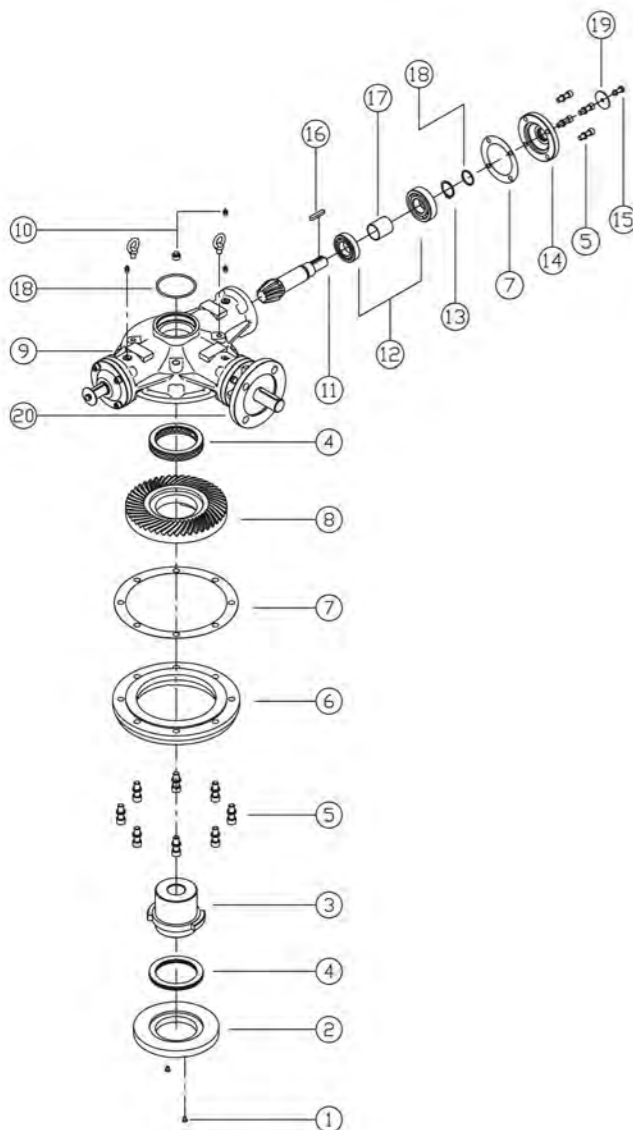


Characteristic

1. Widely used on the Gate & Globe valves and so on under thrust loads;
2. Flexible operation, Giant torque, Little noise, Stable movement and high efficiency are made by adopting arc bevel gear and plane thrust bearing.
3. Protect grade can be IP65;
4. Without stem nut but drive bush, allowed bigger valve stem diameter.;
5. With three changeable input;
6. Handwheel size and stem cover length can be customized according to requirements.

Parts and Material List

NO.	Description	Material	Material number
1	Bolts	Carbon Steel	ASTM A29M-1045
2	Gland	Carbon Steel	ASTM A29M-1020
3	Drive Bush	Bronze	ASTM C61900
4	Thrust Bearing	Alloy Steel	ASTM A295-52100
5	Bolts	Carbon Steel	ASTM A29M-1045
6	Base	Carbon Steel	ASTM A29M-1020
7	Sealing Gasket	Insulation paper	
8	Bevel gear	Carbon Steel	ASTM A29M-1045
9	Housing	Carbon Steel	ASTM A216 WCB
10	Grease Nipple	Carbon Steel	ASTM A29M-1020
11	Pinion Gear	Carbon Steel	ASTM A29M-1045
12	Bearing	Alloy Steel	ASTM A295-52100
13	Snap Ring	Carbon Steel	ASTM A29-1566
14	End Cover	Carbon Steel	ASTM A216 WCB
15	Bolts	Carbon Steel	ASTM A29M-1045
16	Key	Carbon Steel	ASTM A29M-1045
17	Collar	Carbon Steel	ASTM A29M-1020
18	O-ring	Rubber	NBR
19	Handwheel indicator	Carbon Steel	ASTM A29M-1020
20	Motor flange	Carbon Steel	ASTM A216 WCB



Dimension

MODEL	DIM	Mounting Base											External Part			Input Shaft Part		Handwheel
		Type	Flange Size	D1	P.C.D		D3	H0	H1	H2	H3	L2	L	L1	PD	KEY	M	
					D2	N-H-DP												
RMMD-03	A	F-12	85	125	4-M12-18	150	3	53	68	109	209	154	31	21	6 X 6	300		
RMMD-05		F-14	100	140	4-M16-24	175	4	65	78	125	237	172	36	26	8 X 7	400		
RMMD-1		F-16	130	165	4-M20-30	210	5	73	91	138	247	182	40	28	8 X 7	500		
RMMD-2	B	(F-20)	140	205	8-M16-24	250	5	77	81	140	269	204	40	32	10 X 8	550		
RMMD-3		F-25	200	254	8-M16-24	300	5	86	88	152	310	225	47	32	10 X 8	600		
RMMD-5		F-30	230	298	8-M20-30	350	5	102	108	181	380	295	57	32	10 X 8	700		
RMMD-8		F-35	260	356	8-M30-45	430	5	132	141	238	419	333	50	38	10 X 8	800		
RMMD-10		F-40	300	406	8-M36-54	475	8	138	168	270	444	359	50	38	10 X 8	800		

Technical Parameters

MODEL	PARA	Ratio	Flange Size (ISO5211)	Max Valve Stem d _{max}	MAX Thrust	Max Torque Accepted		M.A.	Weight
						Input	Output		
						Nm	Nm		
RMMD-03		4:1	F-12	40	93	105	350	3.4	26
RMMD-05		4:1	F-14	52	127	165	550	3.4	38
RMMD-1		4:1	F-16	60	141	265	900	3.4	50
RMMD-2		4.2:1	(F-20)	65	190	390	1400	3.6	69
RMMD-3		4.1:1	F-25	75	268	660	2300	3.5	83
RMMD-5		5.2:1	F-30	90	308	910	4000	4.4	128
RMMD-8		5.6:1	F-35	110	377	1250	6000	4.8	230
RMMD-10		6.3:1	F-40	130	427	1670	9000	5.4	320

Remark: $\text{Input torque} = \frac{\text{Output torque}}{\text{M.A.}}$

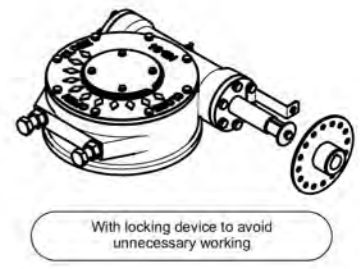
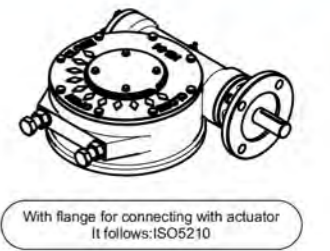
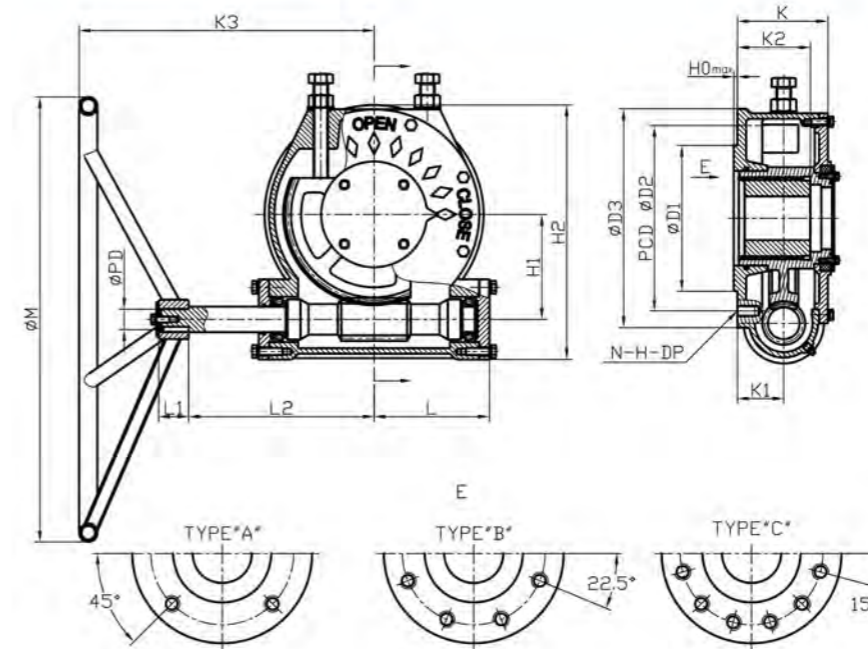
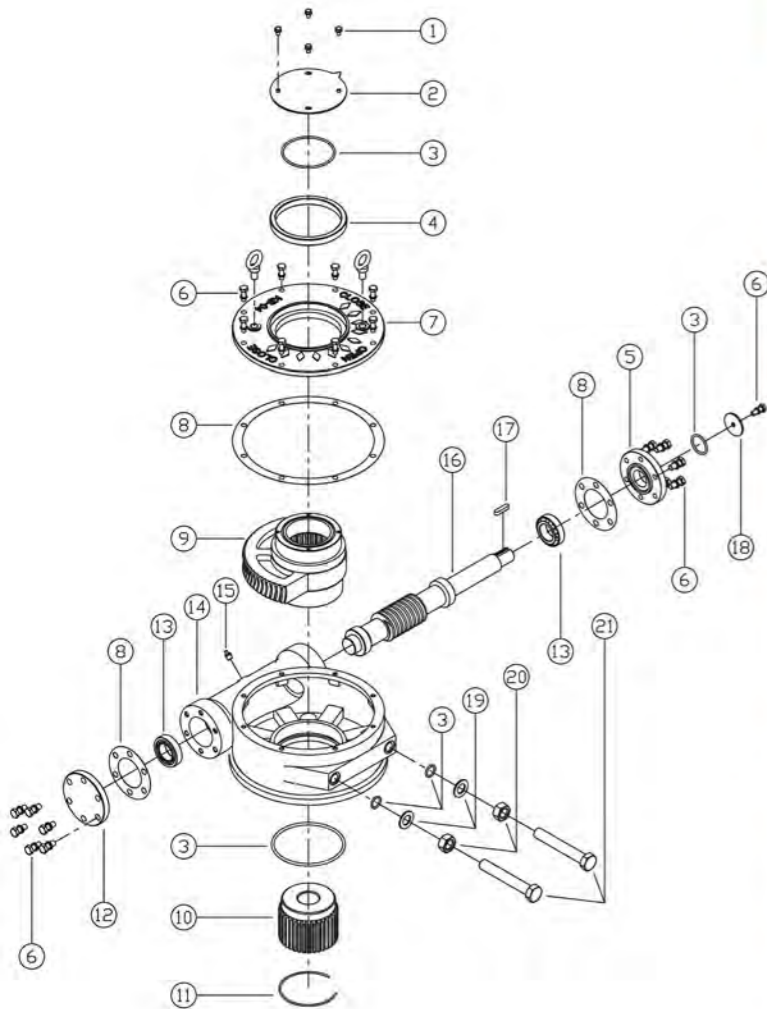


Characteristic

1. The gear box can be used to butterfly valve, ball valve, plug valve and so on;
2. Castings with precision casting, novel style, nice appearance;
3. Design Standard acc to ISO5211, with reasonable structure;
4. Adopting worm gear and worm drive, worm gear with self-locking; by using tapered roller bearings, makes transmission more flexible and with high efficiency;
5. Can be with stem bush, which will be more convenient;
6. Protection class can be IP65;
7. Travelling: 0 ~ 90 degree (+5 degree adjustable)
8. Clockwise rotation of handwheel to close valve and counterclockwise rotation to open valve;
9. Handwheel size can be customized according to requirement.

Parts and Material List

NO.	Description	Material	Material number
1	Bolts	Carbon Steel	ASTM A29M-1020
2	Indicator Plate	Carbon Steel	ASTM A29M-1020
3	O-ring	Rubber	NBR
4	Oil seal	Rubber	NBR
5	Gland Cover	Carbon Steel	ASTM A29M-1020
6	Bolts	Carbon Steel	ASTM A29M-1045
7	Cover	Carbon Steel/ Ductile iron	ASTM A216 WCB/ ASTM A536 65-45-12
8	Sealing Gasket	Insulation paper	
9	Worm Gear	Ductile iron	ASTM A536 65-45-12
10	Stem Bush	Carbon Steel	ASTM A29M-1020
11	Snap Ring	Carbon Steel	ASTM A29-1566
12	End Cover	Carbon Steel	ASTM A29M-1020
13	Bearing	Alloy Steel	ASTM A295-52100
14	Body	Carbon Steel/ Ductile iron	ASTM A216 WCB/ ASTM A536 65-45-12
15	Grease Nipple	Carbon Steel	ASTM A29M-1020
16	Worm	Carbon Steel	ASTM A29M-1045
17	Key	Carbon Steel	ASTM A29M-1045
18	Handwheel indicator	Carbon Steel	ASTM A29M-1020
19	Washer of nuts	Carbon Steel	ASTM A29M-1020
20	Adjusting nuts	Carbon Steel	ASTM A29M-1045
21	Adjusting Bolts	Carbon Steel	ASTM A29M-1045



Dimension

MODEL	DIM	Mounting Base										External Part					Input Shaft Part			Handwheel
		Type	Flange Size	D1	P.C.D		D3	H0	H1	H2	K	K1	K2	K3	L	L2	L1	PD	KEY	M
					D2	N-H-DP														
KB-BF		A	F-07	55	70	4-M8-12	90	3	40	113	58	28	-	133	53	92	26	16	6	160
KB-00		A	F-10	70	102	4-M10-15	125	3	55	150	72	33	49	149	71	103	26	16	6	200
KB-0		A	F-12	85	125	4-M12-18	150	3	66	181	91	48	51	193	83	135	31	21	6	300
KB-01		A	F-14	100	140	4-M16-24	175	4	75	203	94	48	61	290	93	145	31	21	6	400
KB-02		A	F-16	130	165	4-M20-30	210	5	92	245	110	64	68	340	113	195	40	28	8	500
KB-03		A	(F-20)	140	205	8-M16-24	250	5	111	284	112	58	68	393	126	212	40	28	8	600
KB-04		B	F-25	200	254	8-M16-24	300	5	144	349	124	63	100	434	158	254	40	28	8	650
KB-05		B	F-30	230	298	8-M20-30	350	5	160	400	143	71	101	471	190	291	52	45	14	700
KB-06		B	F-35	260	356	8-M30-45	415	5	200	473	169	91	119	545	224	325	52	45	14	750
KB-07		B	F-40	300	406	8-M36-54	475	8	225	535	190	101	155	537	237	317	80	45	14	800
KB-08		B	F-40	300	406	8-M36-50	475	8	270	590	201	102	155	549	279	329	80	45	14	900
KB-09		C	F-48	370	483	12-M36-54	560	8	338	730	232	116	-	661	341	441	80	45	14	900

Technical Parameters

MODEL	PARA	Ratio	Flange Size (ISO5211)	Max Valve Stem dmax mm	Max Torque		M.A. ±10%	Weight Kg
					input	Output		
					Nm	Nm		
KB-BF		28:1	F-07	19 (6 X 6)	45	320	7	5
KB-00		41:1	F-10	27 (8 X 7)	45	500	11	8
KB-0		39:1	F-12	40 (12 X 8)	85	980	11.7	13
KB-01		46:1	F-14	50 (14 X 9)	105	1400	13.8	16
KB-02		49:1	F-16	60 (18 X 11)	170	2500	14.7	26
KB-03		60:1	(F-20)	70 (20 X 12)	215	3800	18	31
KB-04		68:1	F-25	90 (25 X 14)	265	4800	18.3	53
KB-05		59:1	F-30	105 (28 X 16)	360	6300	17.7	74
KB-06		67:1	F-35	120 (32 X 18)	360	7200	20.1	120
KB-07		63:1	F-40	140 (36 X 20)	1500	28000	18.9	160
KB-08		76:1	F-40	165 (40 X 22)	2300	48000	20.9	240
KB-09		73:1	F-48	190 (45 X 25)	3300	72000	21.9	385

Remark:
Input torque:= $\frac{\text{Output torque}}{\text{M.A.}}$

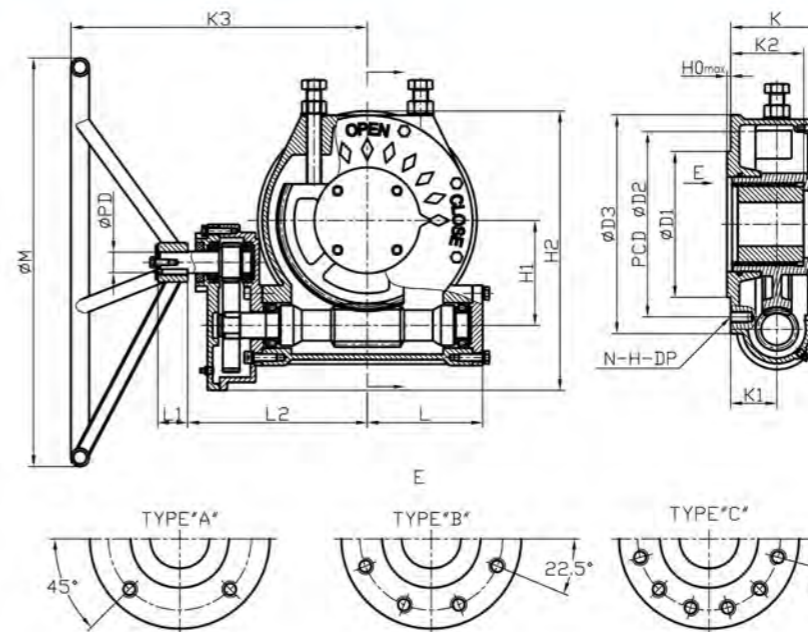
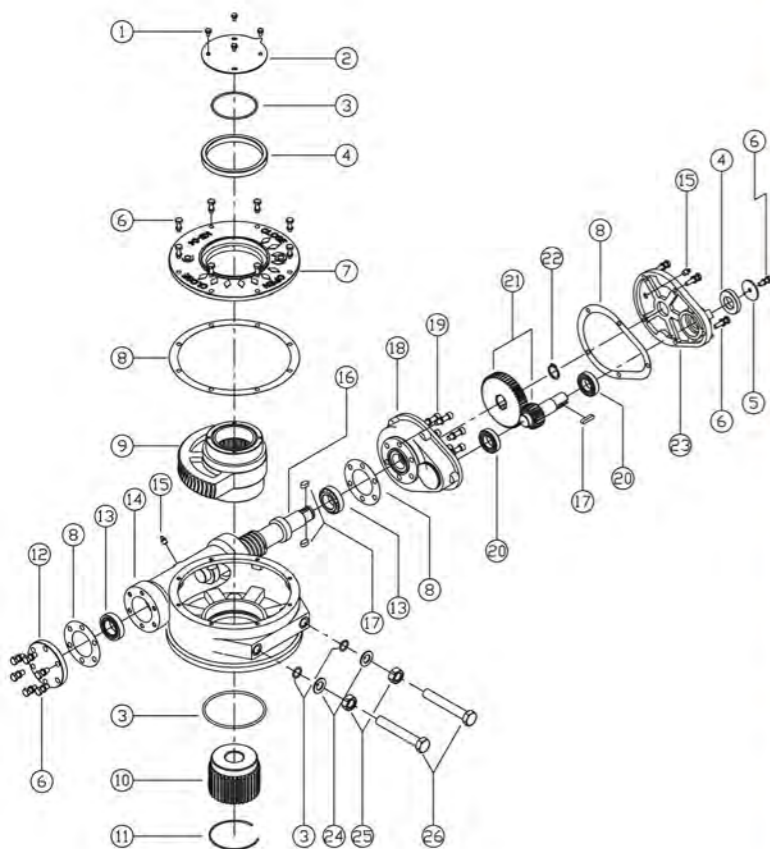


Characteristic

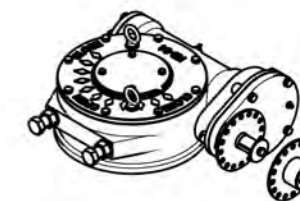
1. The gear box can be used to butterfly valve, ball valve, plug valve and so on;
2. Castings with precision casting, novel style, nice appearance;
3. Design Standard acc to ISO5211, with reasonable structure;
4. Adopting worm gear and worm drive, worm gear with self-locking; by using tapered roller bearings, makes transmission more flexible and with high efficiency;
5. Can be with stem bush, which will be more convenient;
6. One more reducer is used on the gear box, can operate more easily while the ratio is larger.
7. Protection class can be IP65;
8. Travelling: 0 ~ 90 degree (+-5 degree adjustable)
9. Clockwise rotation of handwheel to close valve and counterclockwise rotation to open valve;
10. Handwheel size can be customized according to requirement.

Parts and Material List

NO.	Description	Material	Material number
1	Bolts	Carbon Steel	ASTM A29M-1020
2	Indicator Plate	Carbon Steel	ASTM A29M-1020
3	O-ring	Rubber	NBR
4	Oil seal	Rubber	NBR
5	Handwheel indicator	Carbon Steel	ASTM A29M-1020
6	Bolts	Carbon Steel	ASTM A29M-1045
7	Cover	Carbon Steel/ Ductile iron	ASTM A216 WCB/ ASTM A536 65-45-12
8	Sealing Gasket	Insulation paper	
9	Worm Gear	Ductile iron	ASTM A536 65-45-12
10	Stem Bush	Carbon Steel	ASTM A29M-1020
11	Snap Ring	Carbon Steel	ASTM A29-1566
12	End Cover	Carbon Steel	ASTM A29M-1020
13	Bearing	Alloy Steel	ASTM A295-52100
14	Body	Carbon Steel/ Ductile iron	ASTM A216 WCB/ ASTM A536 65-45-12
15	Grease Nipple	Carbon Steel	ASTM A29M-1020
16	Worm	Carbon Steel	ASTM A29M-1045
17	Key	Carbon Steel	ASTM A29M-1045
18	Reduction body	Carbon Steel/ Ductile iron	ASTM A216 WCB/ ASTM A536 65-45-12
19	Bolts	Carbon Steel	ASTM A29M-1045
20	Bearing	Alloy Steel	ASTM A295-52100
21	Gears	Carbon Steel	ASTM A29M-1045
22	Snap Ring	Carbon Steel	ASTM A29-1566
23	Reduction cover	Carbon Steel/ Ductile iron	ASTM A216 WCB/ ASTM A536 65-45-12
24	Washer of nuts	Carbon Steel	ASTM A29M-1020
25	Adjusting nuts	Carbon Steel	ASTM A29M-1045
26	Adjusting Bolts	Carbon Steel	ASTM A29M-1045



With flange for connecting with actuator
It follows:ISO5210



With locking device to avoid
unnecessary working

Dimension

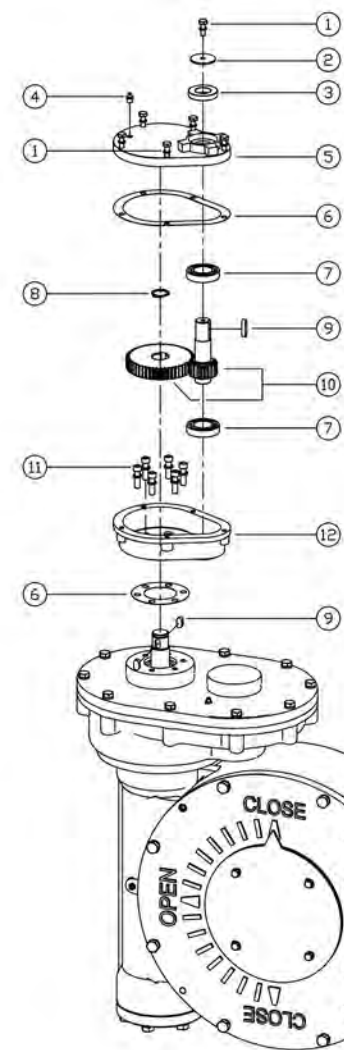
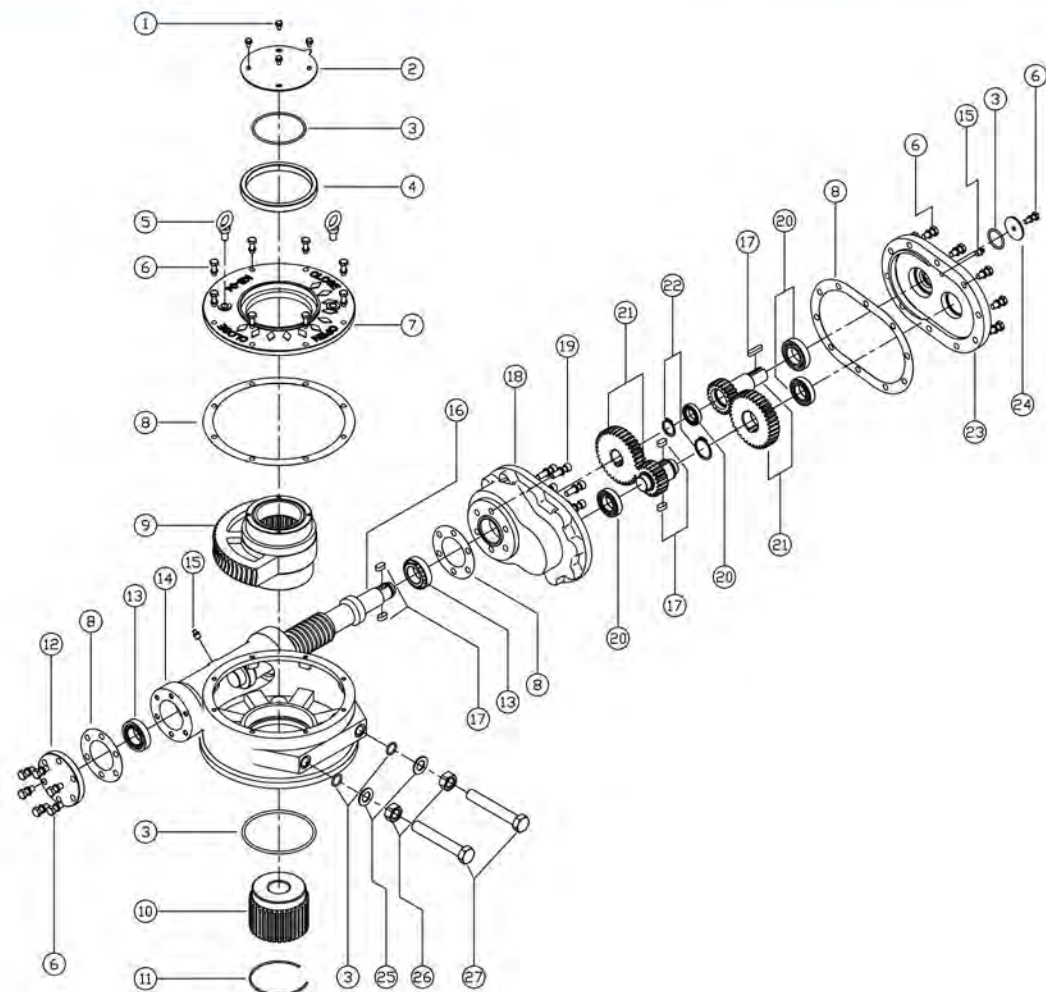
MODEL	DIM	Mounting Base										External Part					Input Shaft Part		Handwheel	
		Type	Flange Size	D1	P.C.D		D3	H0	H1	H2	K	K1	K2	K3	L	L2	L1	PD	KEY	M
					D2	N-H-DP														
KB-0-1S	A	F-12	85	125	4-M12-18	150	3	66	204	91	48	51	220	83	161	31	21	6	300	
KB-01-1S	A	F-14	100	140	4-M16-24	175	4	75	225	94	48	61	276	93	171	31	21	6	350	
KB-02-1S	A	F-16	130	165	4-M20-30	210	5	92	286	110	64	68	350	113	205	40	28	8	450	
KB-03-1S	B	(F-20)	140	205	8-M16-24	250	5	111	325	112	58	68	362	126	217	40	28	8	500	
KB-04-1S	B	F-25	200	254	8-M16-24	300	5	144	383	124	63	100	426	158	246	40	28	8	600	
KB-05-1S	B	F-30	230	298	8-M20-30	350	5	160	453	143	71	101	464	190	284	40	28	8	650	
KB-06-1S	B	F-35	260	356	8-M30-45	415	5	200	525	169	91	119	498	224	318	40	28	8	700	
KB-07-1S	B	F-40	300	406	8-M36-54	475	8	225	619	190	101	155	457	237	417	60	38	10	800	
KB-08-1S	B	F-40	300	406	8-M36-50	475	8	270	668	201	102	155	499	279	459	60	38	10	900	
KB-09-1S	C	F-48	370	483	12-M36-54	560	8	338	790	232	116	-	561	341	521	60	38	10	900	

Unit:mm

Technical Parameters

MODEL	PARA	Ratio	Flange Size (ISO5211)	Max Valve Stem dmax mm	Max Torque		M.A. ±10%	Weight Kg
					Input	Output		
					Nm	Nm		
KB-0-1S		63:1	F-12	40 (12 X 8)	65	1000	16.1	19
KB-01-1S		74:1	F-14	50 (14 X 9)	100	1850	18.9	21
KB-02-1S		129:1	F-16	60 (18 X 11)	90	3000	33	38
KB-03-1S		158:1	(F-20)	70 (20 X 12)	105	4200	40	41
KB-04-1S		179:1	F-25	90 (25 X 14)	160	6500	41	64
KB-05-1S		177:1	F-30	105 (28 X 16)	225	10000	45	91
KB-06-1S		201:1	F-35	120 (32 X 18)	295	15000	51	137
KB-07-1S		202:1	F-40	140 (36 X 20)	590	28000	48	220
KB-08-1S		244:1	F-40	165 (40 X 22)	890	48000	54	290
KB-09-1S		234:1	F-48	190 (45 X 25)	1300	72000	56	450

Remark:
Input torque:= $\frac{\text{Output torque}}{\text{M.A.}}$



Parts and Material List

NO.	Description	Material	Material number
1	Bolts	Carbon Steel	ASTM A29M-1045
2	Handwheel indicator	Carbon Steel	ASTM A29M-1020
3	Oil seal	Rubber	NBR
4	Grease Nipple	Carbon Steel	ASTM A29M-1020
5	Reduction cover	Carbon Steel/ Ductile iron	ASTM A216 WCB/ ASTM A536 65-45-12
6	Sealing Gasket	Insulation paper	
7	Bearing	Alloy Steel	ASTM A295-52100
8	Snap Ring	Carbon Steel	ASTM A29-1566
9	Key	Carbon Steel	ASTM A29M-1045
10	Gears	Carbon Steel	ASTM A29M-1045
11	Bolts	Carbon Steel	ASTM A29M-1045
12	Reduction body	Carbon Steel/ Ductile iron	ASTM A216 WCB/ ASTM A536 65-45-12

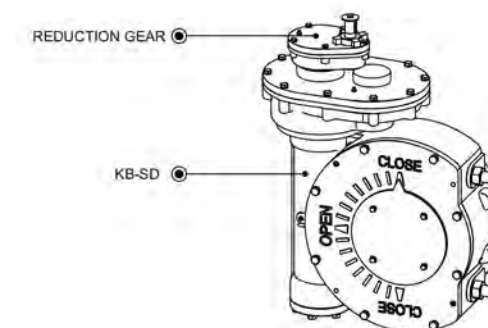
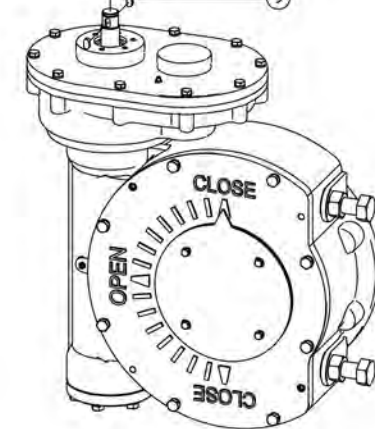
Parts and Material List

NO.	Description	Material	Material number
1	Bolts	Carbon Steel	ASTM A29M-1020
2	Indicator Plate	Carbon Steel	ASTM A29M-1020
3	O-ring	Rubber	NBR
4	Oil seal	Rubber	NBR
5	Lifting rings	Carbon Steel	ASTM A29M-1045
6	Bolts	Carbon Steel	ASTM A29M-1045
7	Cover	Carbon Steel/ Ductile iron	ASTM A216 WCB/ ASTM A536 65-45-12
8	Sealing Gasket	Insulation paper	
9	Worm Gear	Ductile iron	ASTM A536 65-45-12
10	Stem Bush	Carbon Steel	ASTM A29M-1020
11	Snap Ring	Carbon Steel	ASTM A29-1566
12	End Cover	Carbon Steel	ASTM A29M-1020
13	Bearing	Alloy Steel	ASTM A295-52100
14	Body	Carbon Steel/ Ductile iron	ASTM A216 WCB/ ASTM A536 65-45-12

NO.	Description	Material	Material number
15	Grease Nipple	Carbon Steel	ASTM A29M-1020
16	Worm	Carbon Steel	ASTM A29M-1045
17	Key	Carbon Steel	ASTM A29M-1045
18	Reduction body	Carbon Steel/ Ductile iron	ASTM A216 WCB/ ASTM A536 65-45-12
19	Bolts	Carbon Steel	ASTM A29M-1045
20	Bearing	Alloy Steel	ASTM A295-52100
21	Gears	Carbon Steel	ASTM A29M-1045
22	Snap Ring	Carbon Steel	ASTM A29-1566
23	Reduction cover	Carbon Steel/ Ductile iron	ASTM A216 WCB/ ASTM A536 65-45-12
24	Handwheel indicator	Carbon Steel	ASTM A29M-1020
25	Washer of nuts	Carbon Steel	ASTM A29M-1020
26	Adjusting nuts	Carbon Steel	ASTM A29M-1045
27	Adjusting Bolts	Carbon Steel	ASTM A29M-1045

Model Instruction

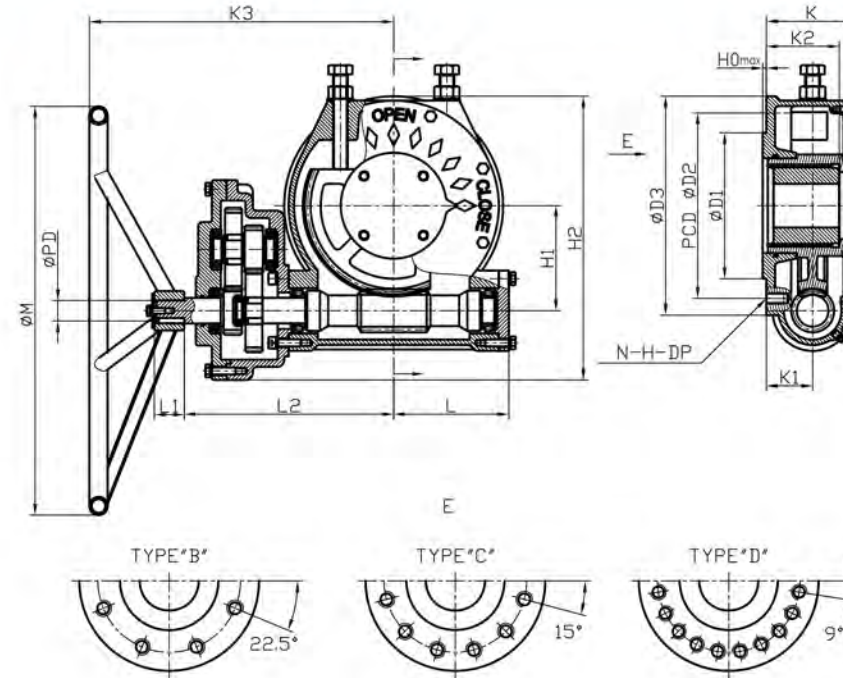
The models KB-SD + 1S, has one more reduction gear based on KB-SD models, which makes the ratio bigger to meet the requirements of lower input torque



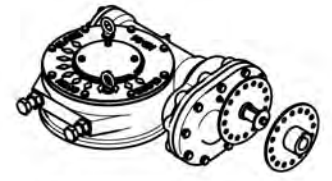


Characteristic

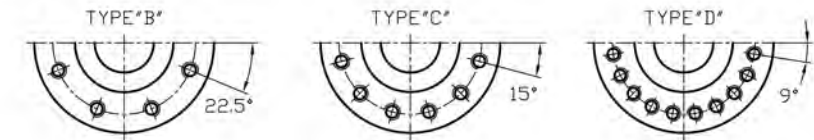
1. The gear box can be used to butterfly valve, ball valve, plug valve and so on;
2. Castings with precision casting, novel style, nice appearance;
3. Design Standard acc to ISO5211, with reasonable structure;
4. Adopting worm gear and worm drive, worm gear with self-locking; by using tapered roller bearings, makes transmission more flexible and with high efficiency;
5. Can be with stem bush, which will be more convenient;
6. One or two more reducer are used on the gear box, can operate more easily while the ratio is larger varied;
7. Protection class can be IP65;
8. Travelling: 0 ~ 90 degree (+-5 degree adjustable)
9. Clockwise rotation of handwheel to close valve and counterclockwise rotation to open valve;
10. Handwheel size can be customized according to requirement.



With flange for connecting with actuator
It follows:ISO5210



With locking device to avoid unnecessary working



Technical Parameters

MODEL	PARA Ratio	Flange Size (ISO5211)	Max Valve Stem drmax mm	Max Torque		M.A. ±10%	Weight Kg
				Input Nm	Output Nm		
KB-04-1SD	220:1	F-25	90(25 X 14)	205	8000	39.6	74
KB-05-1SD	260:1	F-30	105(28 X 16)	250	13000	52	97
KB-05-2SD	399:1	F-30	105(28 X 16)	190	15000	79.8	115
KB-06-1SD	295:1	F-35	120(32 X 18)	305	18000	59	145
KB-06-2SD	453:1	F-35	120(32 X 18)	200	18000	90.6	163
KB-06-2SDF	603:1	F-35	120(32 X 18)	150	18000	120.6	163
KB-07-1SD	426:1	F-40	140(36 X 20)	285	24000	85.2	180
KB-07-2SD	881:1	F-40	140(36 X 20)	170	30000	176.2	223
KB-08-1SD	514:1	F-40	165(40 X 22)	455	42000	92.5	270
KB-08-2SD	1062:1	F-40	165(40 X 22)	220	42000	191	290
KB-08-3SD	1216:1	F-40	165(40 X 22)	240	52000	219	305
KB-08-3SD+1S04	3198:1	F-40	165(40 X 22)	110	52000	489	320
KB-09-1SD	1168:1	F-48	190(45 X 25)	320	75000	233	460
KB-09-1SD+1S04	3072:1	F-48	190(45 X 25)	175	90000	522	475
KB-10-1SD	1517:1	F-60	250(56 X 32)	430	130000	303	760
KB-10-1SDF+1S05	3689:1	F-60	250(56 X 32)	265	165000	627	780
KB-11-1SD	696:1	F-60	300(70 X 36)	1800	250000	139	1460
KB-11-1SD+1SD07	4704:1	F-60	300(70 X 36)	335	250000	753	1500

Dimension

MODEL	DIM Type	Mounting Base						External Part						Input Shaft Part			Handwheel		
		Flange Size	D1	P.C.D		D3	H0	H1	H2	K	K1	K2	K3	L	L2	L1	PD	KEY	M
				D2	N-H-DP														
KB-04-1SD	B	F-25	200	254	8-M16-24	300	5	144	389	124	63	100	467	158	287	40	28	8	600
KB-05-1SD	B	F-30	230	298	8-M20-30	350	5	160	440	143	71	101	494	190	314	40	28	8	650
KB-05-2SD		F-30	230	298	8-M20-30	350	5	160	440	143	71	101	533	190	353	51	38	10	650
KB-06-1SD	B	F-35	260	356	8-M30-45	415	5	200	512	169	91	119	528	224	348	40	28	8	700
KB-06-2SD		F-35	260	356	8-M30-45	415	5	200	512	169	91	119	567	224	387	51	38	10	700
KB-06-2SDF		F-35	260	356	8-M30-45	415	5	200	512	169	91	119	567	224	387	51	38	10	700
KB-07-1SD	B	F-40	300	406	8-M36-54	475	8	225	583	190	101	155	616	237	396	51	38	10	750
KB-07-2SD		F-40	300	406	8-M36-54	475	8	225	583	190	101	155	621	237	401	40	28	8	750
KB-08-1SD	B	F-40	300	406	8-M36-50	475	8	270	670	201	102	155	658	279	438	51	38	10	800
KB-08-2SD		F-40	300	406	8-M36-50	475	8	270	670	201	102	155	663	279	443	40	28	8	800
KB-08-3SD		F-40	300	406	8-M36-50	475	8	270	670	201	102	155	665	279	445	52	45	14	800
KB-08-3SD+1S04		F-40	300	406	8-M36-50	475	8	270	670	201	102	155	796	279	536	40	28	8	800
KB-09-1SD	C	F-48	370	483	12-M36-54	560	8	338	777	232	116	-	726	341	506	52	45	14	800
KB-09-1SD+1S04		F-48	370	483	12-M36-54	560	8	338	777	232	116	-	827	341	607	40	28	8	800
KB-10-1SD	D	F-60	470	603	20-M36-54	686	8	430	958	282	140	-	849	387	629	52	45	14	900
KB-10-1SDF+1S05		F-60	470	603	20-M36-54	686	8	430	958	282	140	-	926	387	706	40	28	8	900
KB-11-1SD	D	F-60	470	603	20-M36-54	686	8	500	1110	338	160	-	1050	467	800	68	55	16	1000
KB-11-1SD+1SD07		F-60	470	603	20-M36-54	686	8	500	1110	338	160	-	1184	467	934	51	38	10	1000

Unit:mm

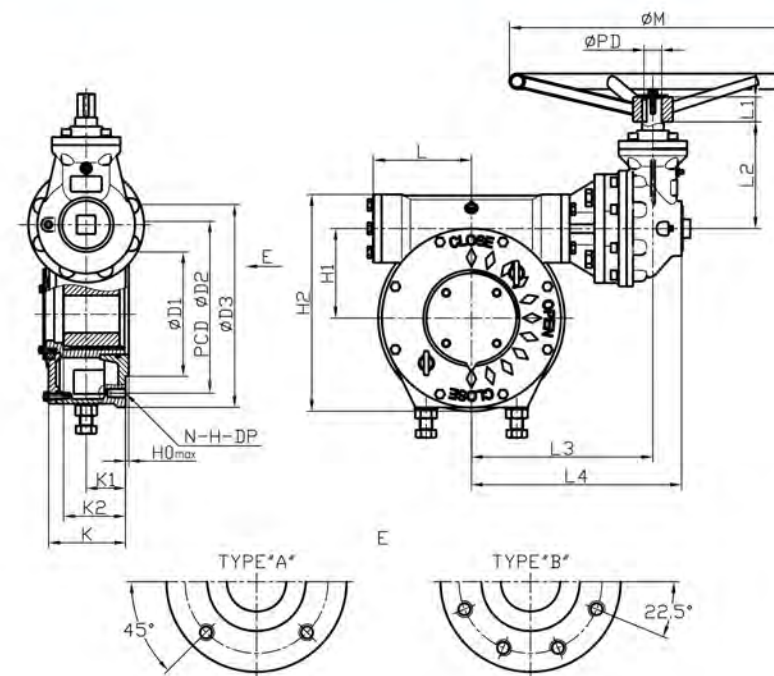
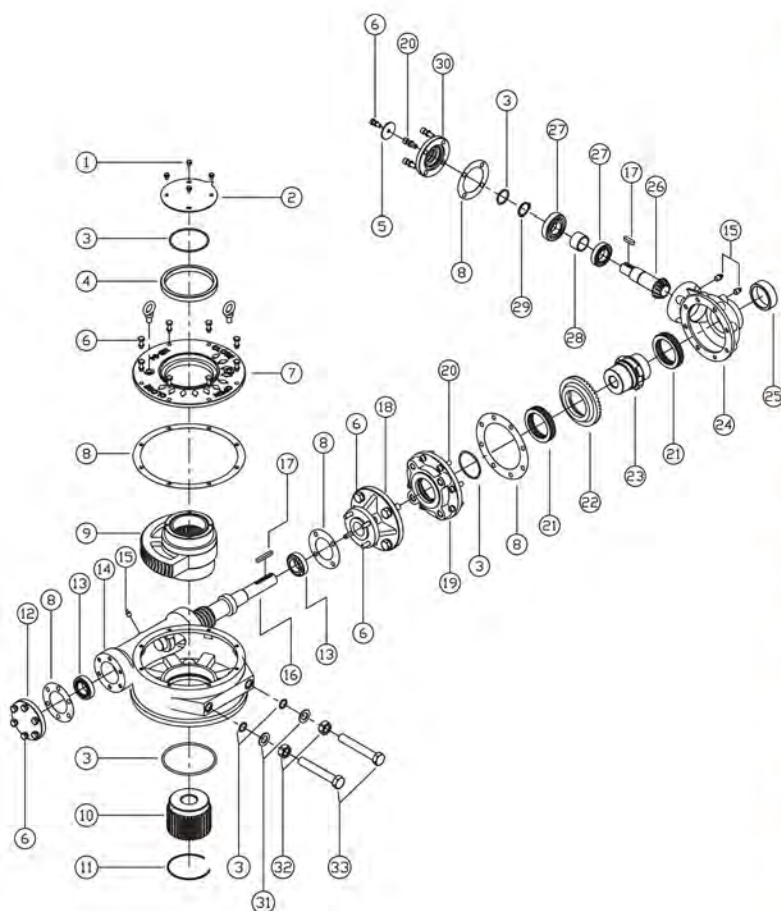


Characteristic

1. The gear box can be used to butterfly valve, ball valve, plug valve and so on;
2. Castings with precision casting, novel style, nice appearance;
3. Design Standard acc to ISO5211, with reasonable structure;
4. Adopting worm gear and worm drive, worm gear with self-locking; by using tapered roller bearings ,makes transmission more flexible and with high efficiency;
5. Can be with stem bush,which will be more convinient;
6. A bevel gear box as reducer is used on the gear box, can operate more easily while the ratio is larger and can change the position of input;
7. Protection class can be IP65;
8. Travelling: 0 ~ 90 degree (+-5 degree adjustable)
9. Clockwise rotation of handwheel to close valve and counterclockwise rotation to open valve;
10. Handwheel size can be customized according to requirement.

Parts and Material List

NO.	Description	Material	Material number
1	Bolts	Carbon Steel	ASTM A29M-1020
2	Indicator Plate	Carbon Steel	ASTM A29M-1020
3	O-ring	Rubber	NBR
4	Oil seal	Rubber	NBR
5	Handwheel indicator	Carbon Steel	ASTM A29M-1020
6	Bolts	Carbon Steel	ASTM A29M-1045
7	Cover	Carbon Steel/ Ductile iron	ASTM A216 WCB / ASTM A536 65-45-12
8	Sealing Gasket	Insulation paper	
9	Worm Gear	Ductile iron	ASTM A536 65-45-12
10	Stem Nut	Carbon Steel	ASTM A29M-1020
11	Fixed Spring	Carbon Steel	ASTM A29-1566
12	End Cover	Carbon Steel	ASTM A29M-1020
13	Bearing	Alloy Steel	ASTM A295-52100
14	Body	Carbon Steel/ Ductile iron	ASTM A216 WCB / ASTM A536 65-45-12
15	Grease Nipple	Carbon Steel	ASTM A29M-1020
16	Worm	Carbon Steel	ASTM A29M-1045
17	Key	Carbon Steel	ASTM A29M-1045
18	Bracket	Carbon Steel	ASTM A216 WCB
19	Base	Carbon Steel/ Ductile iron	ASTM A216 WCB / ASTM A536 65-45-12
20	Bolts	Carbon Steel	ASTM A29M-1045
21	Thrust Bearing	Alloy Steel	ASTM A295-52100
22	Bevel gear	Carbon Steel	ASTM A29M-1045
23	Drive Sleeve	Ductile iron	ASTM A536 65-45-12
24	Bevel Gear Body	Carbon Steel/ Ductile iron	ASTM A216 WCB / ASTM A536 65-45-12
25	Cover	Carbon Steel	ASTM A29M-1020
26	Pinion Gear	Carbon Steel	ASTM A29M-1045
27	Bearing	Alloy Steel	ASTM A295-52100
28	Collar	Carbon Steel	ASTM A29M-1020
29	Snap Ring	Carbon Steel	ASTM A29-1566
30	Gland Cover	Carbon Steel/ Ductile iron	ASTM A216 WCB / ASTM A536 65-45-12
31	Washer of nuts	Carbon Steel	ASTM A29M-1020
32	Adjusting nuts	Carbon Steel	ASTM A29M-1045
33	Adjusting Bolts	Carbon Steel	ASTM A29M-1045



Vertical input shaft



Horizontal input shaft

Dimension

Unit:mm

MODEL	DIM	Mounting Base										External Part				Input Shaft Part		Handwheel			
		Type	Flange Size	D1	P.C.D		D3	H0	H1	H2	K	K1	K2	L	L2	L3	L4	L1	PD	KEY	M
					D2	N-H-DP															
KB-0+VS10	A	F-12	85	125	4-M12-18	150	3	66	181	91	48	51	83	131	181	215	36	26	8	300	
KB-01+VS10		F-14	100	140	4-M16-24	175	4	75	203	94	48	61	93	131	191	225	36	26	8	350	
KB-02+VS20		F-16	130	165	4-M20-30	210	5	92	245	110	64	68	113	140	211	254	36	26	8	450	
KB-03+VS20	B	(F-20)	140	205	8-M16-24	250	5	111	284	112	58	68	126	140	223	266	36	26	8	500	
KB-04+V0		F-25	200	254	8-M16-24	300	5	144	349	124	63	100	158	165	292	338	40	28	8	600	
KB-05+V1		F-30	230	298	8-M20-30	350	5	160	400	143	71	101	190	182	337	385	40	28	8	650	
KB-06+V1	F-35	260	356	8-M30-45	415	5	200	473	169	91	119	224	182	371	419	40	28	8	700		

Technical Parameters

MODEL	PARA	Ratio	Flange Size (ISO5211)	Max Valve Stem dmax mm	Max Torque		M.A ±10%	Weight Kg
					Input	Output		
					Nm	Nm		
KB-0+VS10		98:1	F-12	40 (12 X 8)	40	1000	25	20
KB-01+VS10		115:1	F-14	50 (14 X 9)	65	1850	29.3	23
KB-02+VS20		147:1	F16	60 (18 X 11)	80	3000	37.5	36
KB-03+VS20		180:1	(F-20)	70 (20 X 12)	95	4200	45.9	40
KB-04+V0		204:1	F-25	90 (25 X 14)	140	6500	47.7	68
KB-05+V1		212:1	F-30	105 (28 X 16)	185	10000	54.1	95
KB-06+V1		241:1	F-35	120 (32 X 18)	245	15000	61.5	140

Remark:
Input torque = $\frac{\text{Output torque}}{\text{M.A.}}$

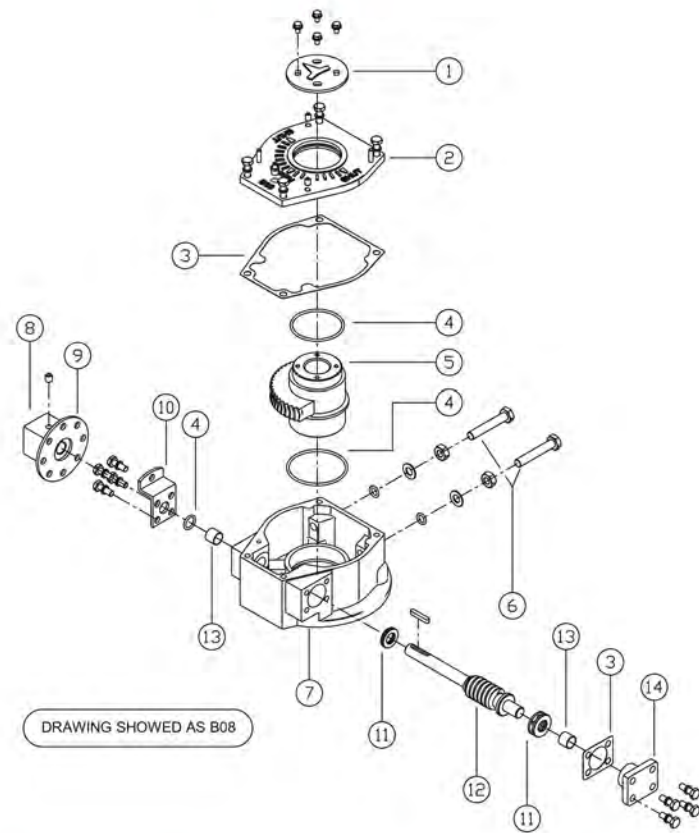


Characteristic

1. The gear box can be used to butterfly valve, ball valve, plug valve and so on;
2. Castings with precision casting, novel style, nice appearance;
3. Design Standard acc to ISO5211, with reasonable structure;
4. Adopting worm gear and worm drive, worm gear with self-locking; by using tapered roller bearings, makes transmission more flexible and with high efficiency;
5. With locking device itself;
6. Protection class can be IP65;
7. Travelling: 0 ~ 90 degree (+-5 degree adjustable)
8. Clockwise rotation of handwheel to close valve and counterclockwise rotation to open valve;
9. Handwheel size can be customized according to requirement.

Parts and Material List

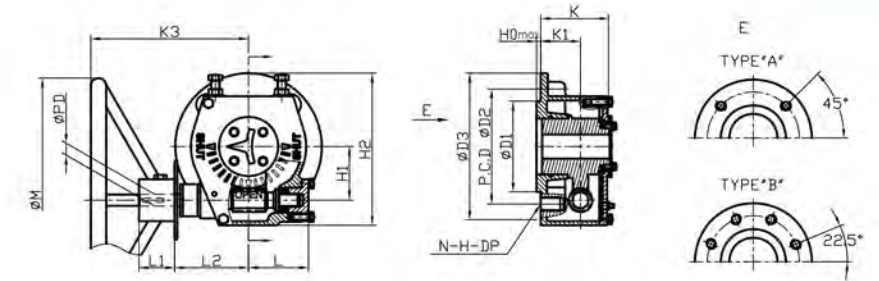
NO.	Description	Material	Material number
1	Indicator Plate	Carbon Steel	ASTM A29M-1020
2	Cover	Carbon Steel/ Ductile iron	ASTM A216 WCB/ ASTM A536 65-45-12
3	Sealing Gasket	Insulation paper	
4	O-ring	Rubber	NBR
5	Worm Gear	Ductile iron	ASTM A536 65-45-12
6	Adjusting Bolt	Carbon Steel	ASTM A29M-1045
7	Body	Carbon Steel/ Ductile iron	ASTM A216 WCB/ ASTM A536 65-45-12
8	Handwheel core	Powder metallurgy	F0122J
9	Locking Plate	Carbon Steel	ASTM A29M-1020
10	Locking parts	Carbon Steel	ASTM A29M-1020
11	Bearing	Alloy Steel	ASTM A295-52100
12	Worm	Carbon Steel	ASTM A29M-1045
13	Composite bearing sleeve	Composite materials	SF-1
14	End Cover	Carbon Steel/ Ductile iron	ASTM A216 WCB/ ASTM A536 65-45-12



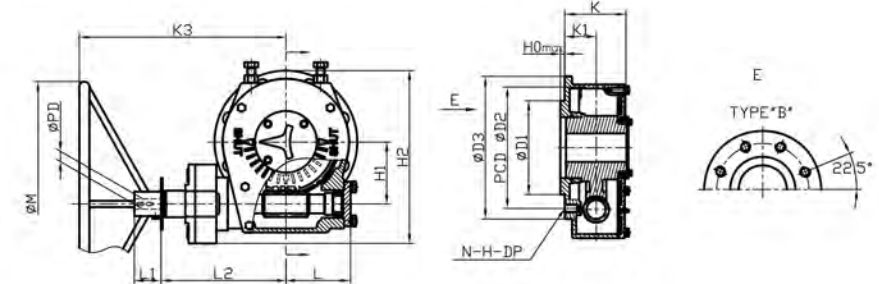
DRAWING SHOWN AS B08



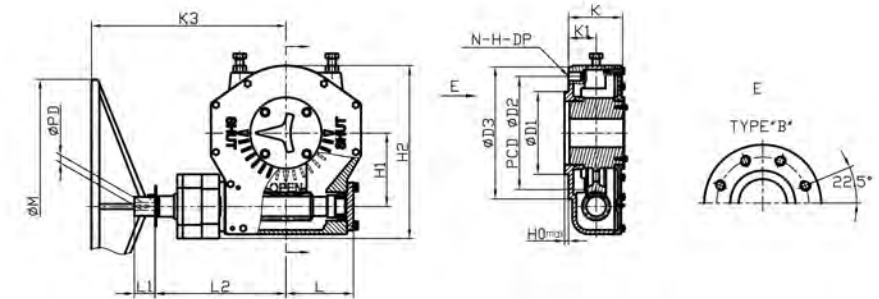
DRAWING FOR B07 B08 B18 B28



DRAWING FOR B38



DRAWING FOR B48, B58



Technical Parameters

MODEL	PARA	Ratio	Flange Size (ISO5211)	Max Valve Stem d _{max} mm	Max Torque		M.A.	Weight Kg
					Input Nm	Output Nm		
B07		54:1	F-12	40 (12 X 8)	70	900	13.5	10
B08		50:1	F-16	50 (14 X 9)	100	1400	13.8	15
B18		68:1	(F-20)	65 (18 X 11)	145	2400	17	25
B28		68:1	F-25	80 (22 X 14)	210	3500	17	40
B38		310:1	F-30	100 (28 X 16)	155	10000	66	89
B48		690:1	F-35	140 (36 X 20)	245	30000	124	186
B58		1216:1	F-40	165 (40 X 22)	220	48000	219	305

Dimension

MODEL	DIM	Mounting Base										External Part				Input Shaft Part		Handwheel	
		Type	Flange Size	D1	P.C.D		D3	H0	H1	H2	K	K1	K3	L	L2	L1	PD	KEY	M
					D2	N-H-DP													
B07	A	F-12	85	125	4-M12-18	150	3	69	177	77	40	216	80	96	51	17	6	350	
B08	A	F-16	130	165	4-M20-30	210	5	77	218	95	57	224	86	104	51	17	6	350	
B18	B	(F-20)	140	205	8-M16-24	250	5	105	270	100	58	283	95	123	51	20	6	450	
B28	B	F-25	200	254	8-M16-24	300	5	126	322	107	59	355	120	155	65	25	8	600	
B38	B	F-30	230	298	8-M20-30	350	5	152	424	147	77	500	159	300	65	25	8	600	
B48	B	F-35	260	356	8-M30-38	415	5	231	544	165	87	612	213	412	65	25	8	700	
B58		F-40	300	406	8-M36-50	475	8	270	665	201	101	645	279	445	52	45	14	800	

Unit:mm

Remark:
Input torque = $\frac{\text{Output torque}}{\text{M.A.}}$